



ELSEVIER

Available online at www.sciencedirect.com

SCIENCE @ DIRECT®

Nuclear Instruments and Methods in Physics Research A 507 (2003) 210–214

**NUCLEAR
INSTRUMENTS
& METHODS
IN PHYSICS
RESEARCH**
Section A

www.elsevier.com/locate/nima

First beam measurements at the photo injector test facility at DESY Zeuthen[☆]

R. Bakker^a, M.v. Hartrott^a, E. Jaeschke^a, D. Krämer^a, J.P. Carneiro^b,
K. Flöttmann^b, P. Piot^b, J. Roßbach^b, S. Schreiber^b, K. Abrahamyan^{c,1}, J. Bähr^{c,*},
I. Bohnet^c, V. Djordjadze^{c,2}, U. Gensch^c, H.J. Graboschi^c, Z. Li^{c,3}, D. Lipka^c,
A. Oppelt^c, B. Petrossyan^{c,3}, F. Stephan^c, P. Michelato^d, C. Pagani^d, D. Sertore^d,
V. Miltchev^e, I. Tsakov^e, A. Liero^f, H. Redlin^f, W. Sandner^f, R. Schumann^f,
I. Will^f, R. Cee^g, M. Krassilnikov^g, S. Setzer^g, T. Weiland^g

^a *BESSY, 12489 Berlin, Germany*

^b *DESY, 22603 Hamburg, Germany*

^c *DESY, 15738 Zeuthen, Germany*

^d *INFN Milano, 20090 Segrate, Italy*

^e *INRNE Sofia, 1784 Sofia, Bulgaria*

^f *Max-Born-Institute, 12489 Berlin, Germany*

^g *TU Darmstadt, 64289 Darmstadt, Germany*

Abstract

The Photo Injector Test facility at DESY Zeuthen (PITZ) was built to develop electron sources for the TESLA Test Facility Free Electron Laser and future linear colliders. The main goal is to study the production of minimum transverse emittance beams with short bunch length at medium charge (~ 1 nC). The facility includes a 1.5 cell L-band cavity with coaxial RF coupler, a solenoid for space charge compensation, a laser capable to generate long pulse trains, an UHV photo cathode exchange system, and different diagnostics tools. Besides an overview of the facility, its main components and their commissioning, this contribution will concentrate on the first measurements at PITZ with photoelectrons. This will include measurements of the transverse and longitudinal laser profile, charge and quantum efficiency, momentum and momentum spread, transverse electron beam profiles at different locations and first results on transverse emittance.

© 2003 Elsevier Science B.V. All rights reserved.

PACS: 29.25.Bx; 29.27.Fh; 41.60.Cr; 41.75.Fr; 41.85.Ew

Keywords: RF photoinjector; Test facility; Gun optimization; Free electron laser; Linear collider; Transverse emittance

[☆]The project is funded partially by the HGF Vernetzungsfond.

*Corresponding author.

E-mail address: juergen.baehr@desy.de, baehr@ifh.de (J. Bähr).

¹ On leave from YERPHI, 375036 Yerevan, Armenia.

² On leave from HEPI, 380086 Tbilisi, Georgia.

³ On leave from CAEP, 621900 Mian Yang, China.

1. Introduction

In autumn 1999 it was decided to build a Photo Injector Test facility at DESY Zeuthen (PITZ) [1]. In January 2002 the first photoelectrons were produced. The current major goal is to develop and study an electron source for the TESLA Test Facility Free Electron Laser (TTF-FEL). Here, emphasis is taken on the production of minimum transverse emittance beams at a charge of about 1 nC. Detailed experimental analysis of the transverse and longitudinal phase space will allow benchmarking tests of the theoretical understanding of photo injectors. Using PITZ extensive R&D work on RF guns will be possible at DESY in parallel to the operation of TTF-FEL. This includes the test of new developments on e.g. lasers, beam diagnostics, and photocathodes. In future, investigations of the production of flat beams and polarized electrons for the TESLA project are foreseen.

A description of the set-up and of the hardware components of PITZ are described elsewhere [2]. The schematic overview is presented in Fig. 1.

2. Achievements on RF commissioning

In a smooth commissioning procedure using an automatic conditioning program [3] a stable operation with a 400 μ s long RF pulse at a 5 Hz repetition rate and a gradient of 34 MV/m has been obtained. In future, the RF pulse length will be extended to above 800 μ s. The maximum gradient achieved by the existing RF system was about 37 MV/m at 100 μ s pulse length and 1 Hz repetition rate. A more detailed description of the

conditioning procedure, its results and dark current measurements is given in Ref. [4].

The dark current emission from the cavity has been measured as function of the electric field gradient at the cathode position for different settings of the main solenoid. The bucking magnet current was chosen accordingly to give a zero static magnetic field at the cathode plane. Measurements were performed using the photoemission Cs_2Te cathode. A maximum dark current of about 180 μ A was observed for gradients of 35 MV/m, 1 Hz repetition rate and 100 μ s pulse length. For the conditioning work the usual Cs_2Te -cathode is replaced by a Mo-cathode [5,6]. The dark current emission for this cathode was measured to be a factor of 2 lower than for the Cs_2Te -cathode.

3. The laser system

The schematic of the laser system currently in operation is shown in Fig. 2. The laser is able to generate trains of micropulses up to 800 μ s length.

The temporal profile (gaussian shape) of the laser micropulses in the UV was measured using a streak camera to be about 10 ps FWHM.

The transverse profile of the laser beam at the position of the cathode is measured by means of a splitting plate just before the laser beam enters the vacuum system. The rms laser spot size at the so-called ‘virtual cathode’ [7] was measured to be about 0.6 mm in general. For the beam size and emittance measurements a rms transverse size of 0.25 ± 0.15 mm was obtained (gaussian shape in all cases).

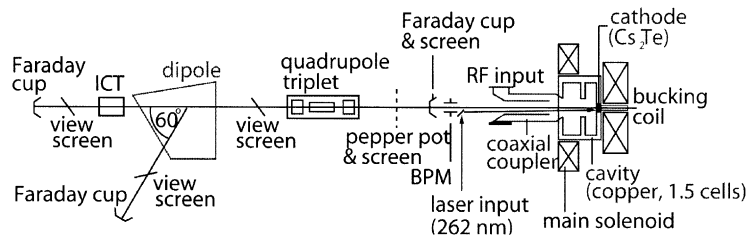


Fig. 1. Schematics of the current set-up.

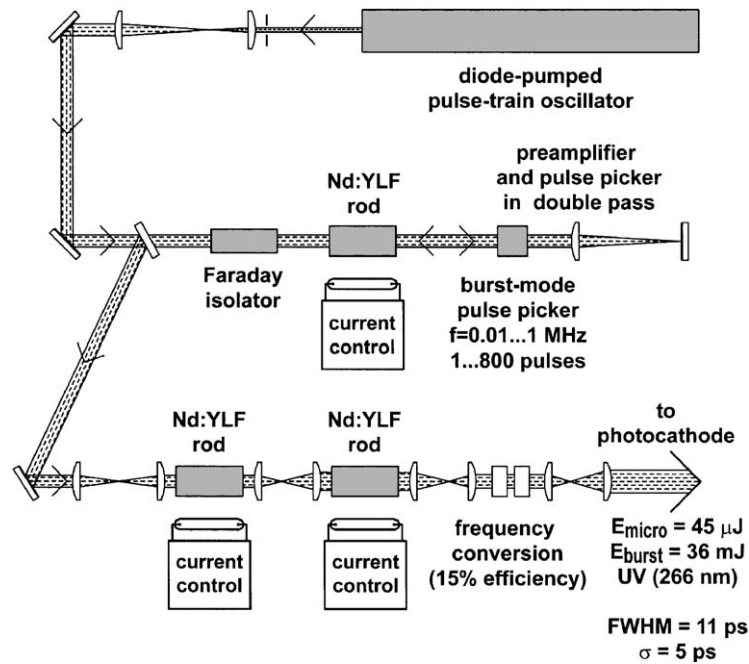


Fig. 2. Optical scheme of the current PITZ laser.

Simulation have shown, that a smaller emittance is achievable, if both, the transverse and longitudinal laser profile is flat [8,9]. Therefore, an important goal of the ongoing laser development at the Max-Born-Institute is to produce a longitudinal flat profile of a length of about 20 ps and a rise time below 2 ps.

4. Measurements with electron beam

4.1. Charge and quantum efficiency

The charge of the electron beam is measured using a Faraday Cup which collects the beam charge and an oscilloscope to integrate over the current signal. Mean charges from the pC scale up to 4.7 nC were obtained.

A first measurement of quantum efficiency for only one value of charge was performed. For 36 MV/m and a magnet current of 240 A a mean charge per bunch of (0.9 ± 0.1) nC was measured. The laser pulse energy of a single bunch in a bunch train of ten bunches was estimated to be

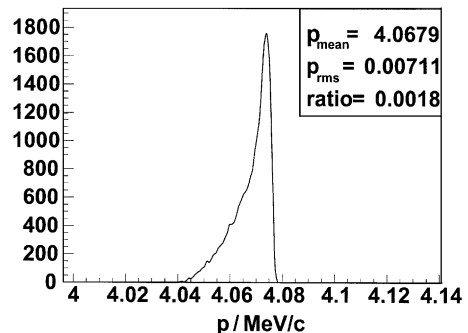


Fig. 3. Momentum distribution for a gradient of about 35 MV/m at mean charge of about 0.4 nC.

(1.0 ± 0.1) μ J just at the cathode. This results in a quantum efficiency of the order of 0.5%.

4.2. Momentum

In Fig. 3 the momentum distribution of the electron beam accelerated at a gradient of about 35 MV/m and measured using the dipole spectrometer is shown. The mean charge is about 0.4 nC.

A detailed methodical outline of the momentum measurement can be found in Ref. [10]. For a gradient of about 37 MV/m the current maximum beam momentum of about 4.3 MeV/c is obtained. The rms momentum spread as function of the number of integrated pulses in a bunch train of constant charge is shown in Fig. 4. It is about 8 keV/c for a low number of pulses. The increase of the measured overall momentum spread with the number of pulses could be caused by an instability of the RF gradient or the phase relation between laser and RF or by a transverse beam jitter.

4.3. Electron beam size and simulations

The size of the electron beam was measured at different screen locations along the beam line (see Fig. 5). The measurement conditions are summarized in Table 1 and in the chapter laser system. For these conditions ASTRA simulation were run and

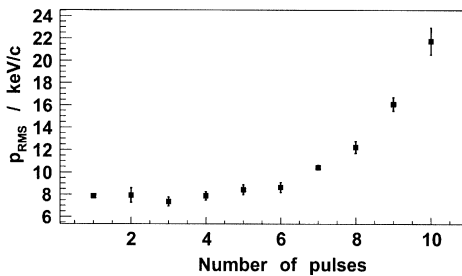


Fig. 4. Momentum spread as function of the number of pulses in the laser bunch train at bunch charge of about 0.4 nC.

compared to the data. All the simulations with input parameters (Table 1) can predict a beam waist around 1m distance from the photocathode but the absolute beam size is not well reproduced, especially for the last two points of observation. Here the simulation always predicts larger sizes. Also the measured momentum distributions and emittances (see Table 1) cannot yet be reproduced by the simulations. These problems need more study in the future. They might be related to the very high space charge effects at the cathode (note smaller beam size) which could also explain the loss of charge from the cathode down the beamline.

4.4. Transverse emittance measurements

Measurements of the transverse emittance were performed using a multi-slit diagnostics. Beamlet profiles were observed 1010 mm downstream of a

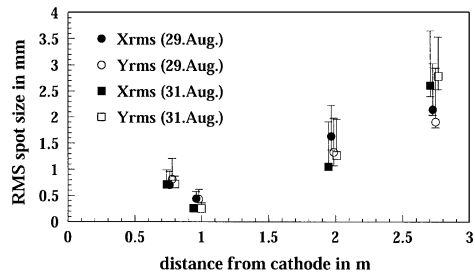


Fig. 5. Two measurements of beam spot sizes under similar operation conditions. The measurements at each of the four locations are slightly displaced to show them more clearly.

Table 1
Emittance measurement and operation parameters

Date	Charge (nC)		$ \bar{P} $ (MeV/c)	Solenoid current (A)		Laser pulses		RMS beam size (mm)	RMS divergence (mrad)	Norm. emittance (mm mrad)
	z -pos. (mm)			Main	Buck	No.	$\sigma_{x,y}$ (mm)			
	768	2736								
Aug 29th	1.4	0.65	4.04	301	170	5	0.25	X 0.44 ^{+0.14} _{-0.02}	0.45 ^{+0.09} _{-0.09}	1.6 ^{+0.6} _{-0.3}
	± 0.14	± 0.07	± 0.08				± 0.15	Y 0.43 ^{+0.19} _{-0.02}	0.45 ^{+0.09} _{-0.09}	1.5 ^{+0.7} _{-0.3}
Aug 31st	1.45	0.90	2 peaks at	300	170	1	0.25	X 0.26 ^{+0.07} _{-0.02}	0.55 ^{+0.12} _{-0.12}	1.2 ^{+0.4} _{-0.3}
	± 0.15	± 0.09	4.26 \pm 0.08 3.98 \pm 0.08				± 0.15	Y 0.25 ^{+0.11} _{-0.02}	0.64 ^{+0.14} _{-0.14}	1.3 ^{+0.6} _{-0.3}

multi-slit mask (1 mm thick tungsten plate, 50 μm slit opening, slit-to-slit separation: 1.0 mm for vertical slits and 0.5 mm for horizontal slits).

The emittance was evaluated as a product of the RMS beam size and the RMS uncorrelated divergence. The beam size is measured directly at the location of the multi-slit mask, the divergence is determined by analysing the beamlet profiles. Since the beamlets are overlapping, their individual sizes are deduced by fitting the overall profile to a mixture of gaussian functions. For the final calculation, the weighted average of the rms width of all beamlets is used.

The result of two independent measurements at similar operation conditions of PITZ are summarized in Table 1. The largest uncertainty of the measured emittance comes from the noise threshold of the camera readout of the beam size and beamlet measurements. Although our CCD cameras [7] have a remote controllable gain which allows the observation of pictures with and without saturation in a large dynamic range, an industrial set noise threshold cuts the low intensity tails of distributions. The uncertainty from this effect is estimated for each beam measurement separately.

5. Summary and outlook

The photoinjector test facility at DESY Zeuthen is now in operation.

First measurements with and without photoelectrons after several months of commissioning and running are presented.

The RF commissioning of the gun reached up to 5 Hz repetition rate with a pulse length of 400 μs and a gradient of about 34 MV/m. The maximum gradient of 37 MV/m was measured at 100 μs pulse length and 1 Hz repetition rate.

A first version of the photocathode laser system was commissioned, delivering up to 800 μs long pulse trains with a micropulse length of about

10 ps FWHM. Beam charges from the pC scale up to 4.7 nC have been produced and the evolution of the beam along the beam line has been measured. The maximum electron momentum obtained was 4.3 MeV/c. First results from the emittance measurement system have been presented. A longer program of operation and optimization is ongoing.

Until spring 2003 the complete characterisation of the RF gun is foreseen and afterwards the set-up will be extended by the installation of a booster cavity.

References

- [1] F. Stephan, et al., Photo Injector Test Facility under construction at DESY Zeuthen, Proceedings of the FEL 2000, Durham, August, 2000.
- [2] PITZ Collaboration, Commissioning of the Photo Injector Test Facility at DESY Zeuthen, in preparation.
- [3] I. Bohnet, et al., Photo Injector Test Facility in commissioning phase at DESY Zeuthen, Proceedings of the EPAC 2002, Paris, June, 2002.
- [4] I. Bohnet, et al., RF Commissioning of the Photo Injector Test Facility at DESY Zeuthen, Nucl. Instr. and Meth., (2003) these proceedings.
- [5] P. Michelato, C. Gesmundo, D. Sertore, High Quantum Efficiency Photocathode Preparation System for TTF Injector II, Proceedings of the FEL 1999, Hamburg, August, 1999.
- [6] D. Sertore, S. Schreiber, K. Flöttmann, F. Stephan, K. Zapfe, P. Michelato, First Operation of Cesium Telluride Photocathodes in the TTF Injector RF-Gun, Proceedings of the FEL 1999, Hamburg, August, 1999.
- [7] J. Bähr, et al., The Diagnostics System for the Photo Injector Test Facility at DESY Zeuthen, Proceedings of the EPAC 2002, Paris, June, 2002.
- [8] S. Setzer, R. Cee, M. Krassilnikov, T. Weiland, FEL Photoinjector Simulation Studies by Combining MAFIA TS2 and ASTRA, Proceedings of the EPAC 2002, Paris, June, 2002.
- [9] M. Ferarrio, K. Flöttmann, T. Limberg, Ph. Piot, B. Grigoryan, Conceptual design of the TESLA XFEL photoinjector, TESLA-FEL Report 2001–03.
- [10] D. Lipka, et al., Measurement of the Longitudinal Phase Space at the Photo Injector Test Facility at DESY Zeuthen, Proceedings of the EPAC 2002, Paris, June, 2002.