

Charite Epp. Tube & Backscattering

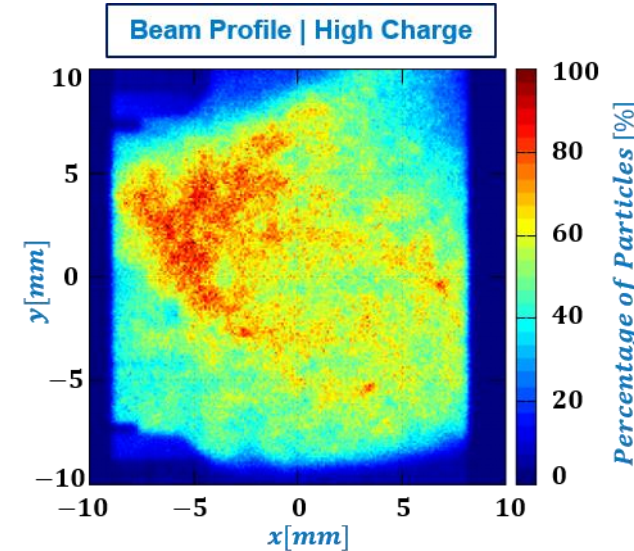
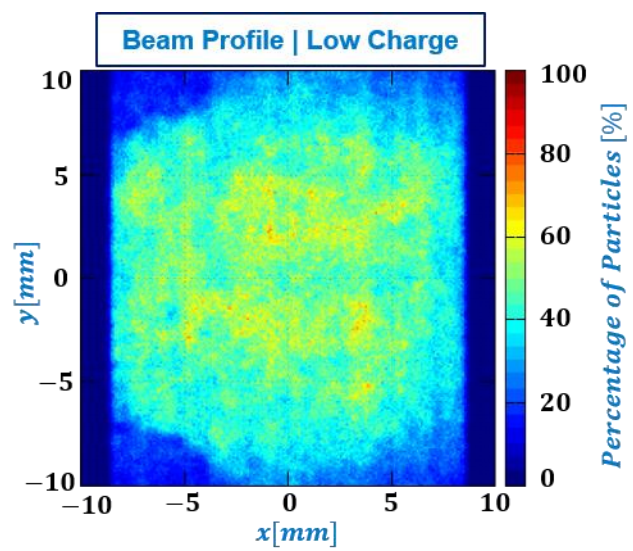
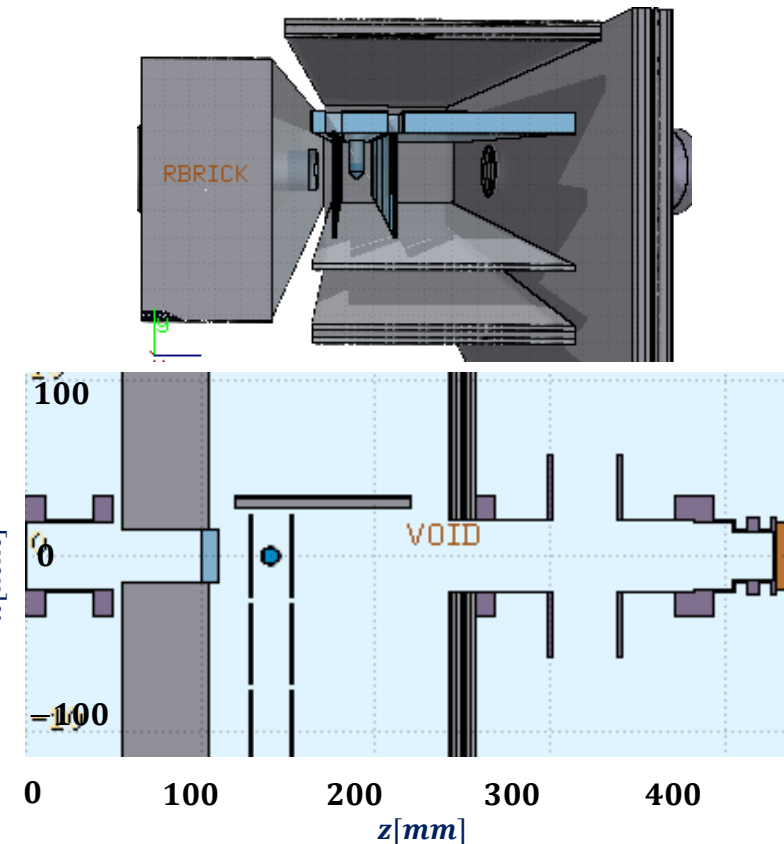
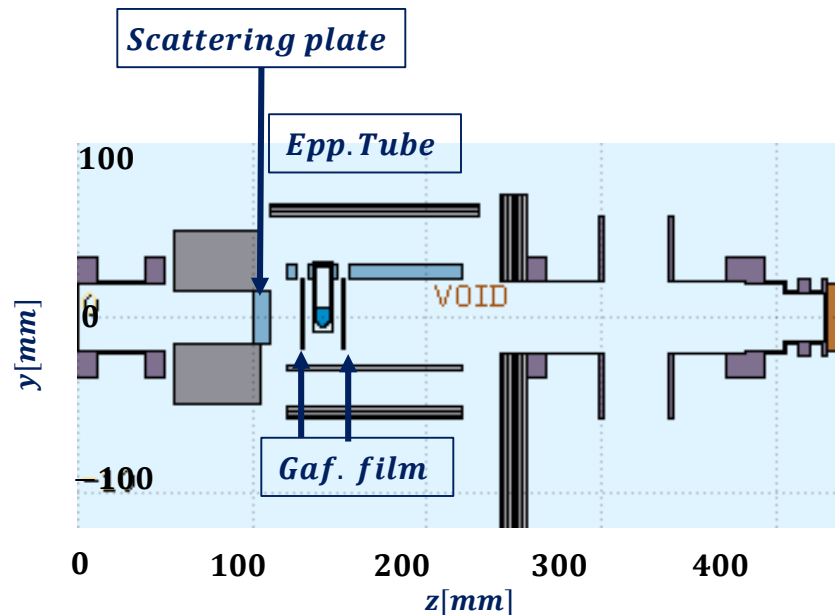
Zohrab Amirkhanyan

Simulation Setup

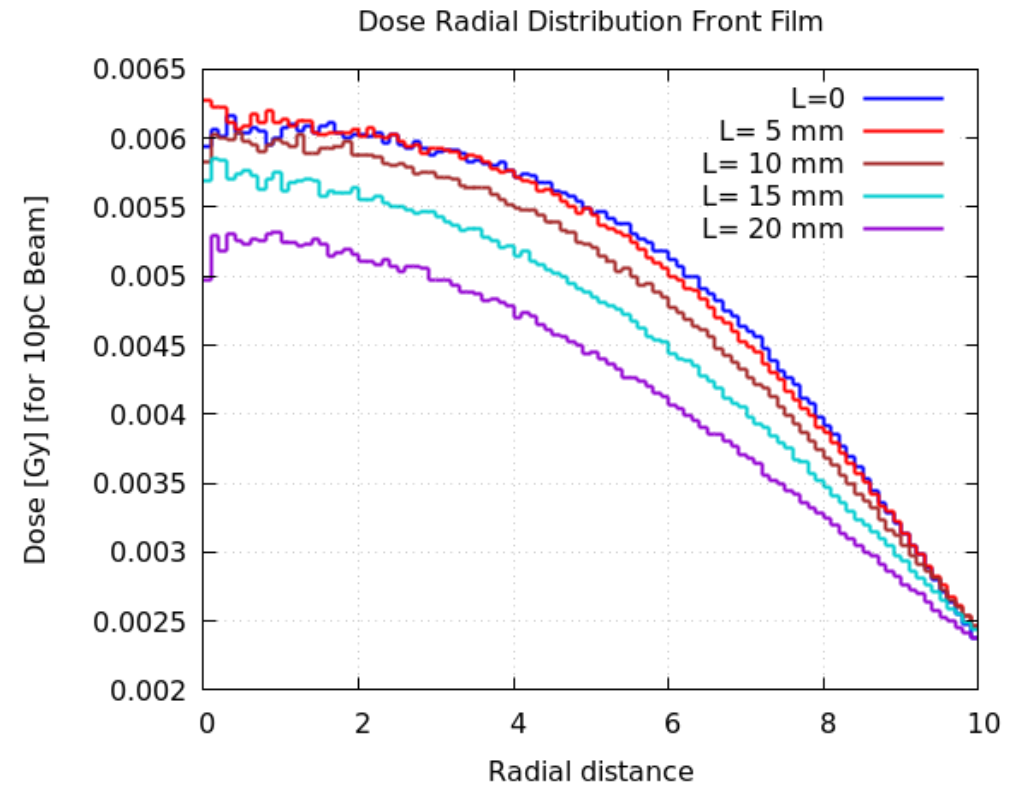
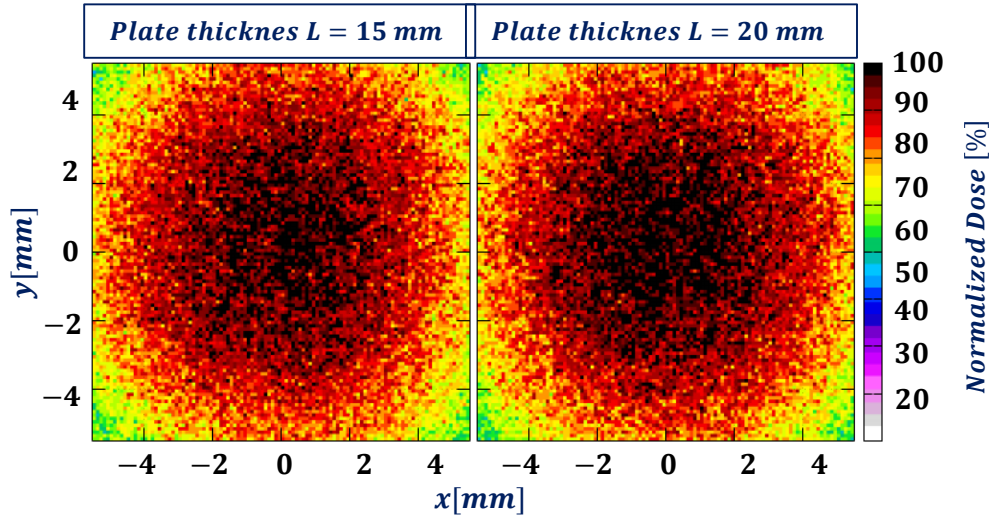
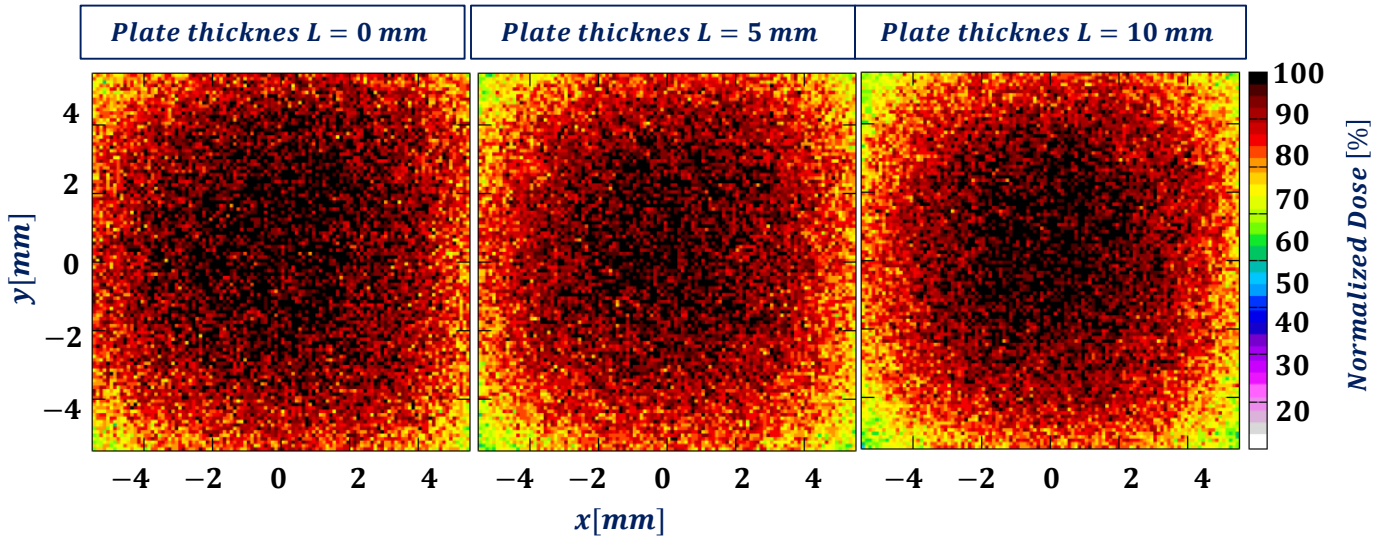
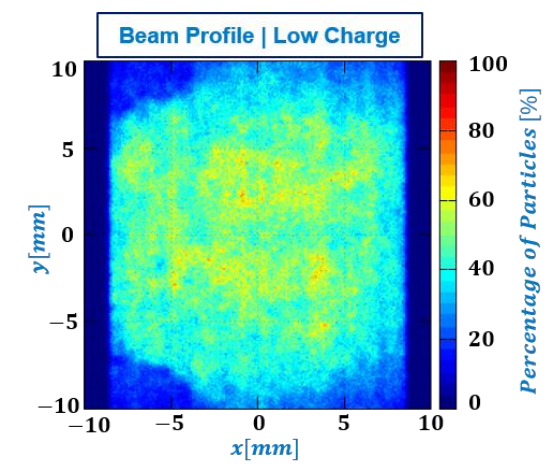
Schematic representation

Geometry setting:

- Lead brick with
 - a thick of **50 mm**.
 - a **hole** diameter of **30 mm**.
- Distance from window to
 - Gaf. film is **150 mm**.
 - FC is **430 mm**
- **Scattering plate:**
 - Various thicknesses from **0 to 20mm**



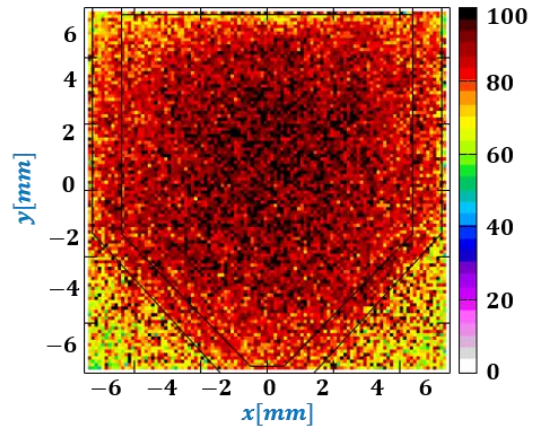
Dose profile at front film



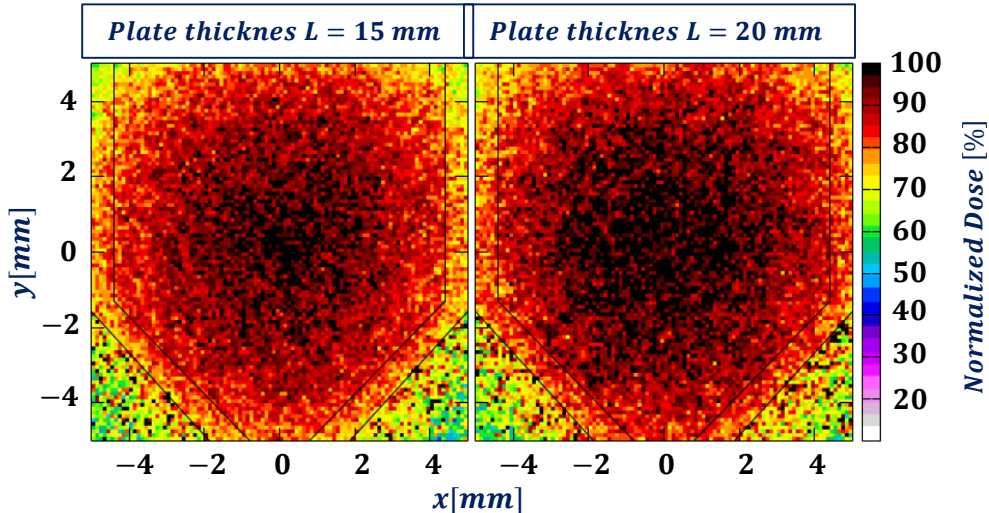
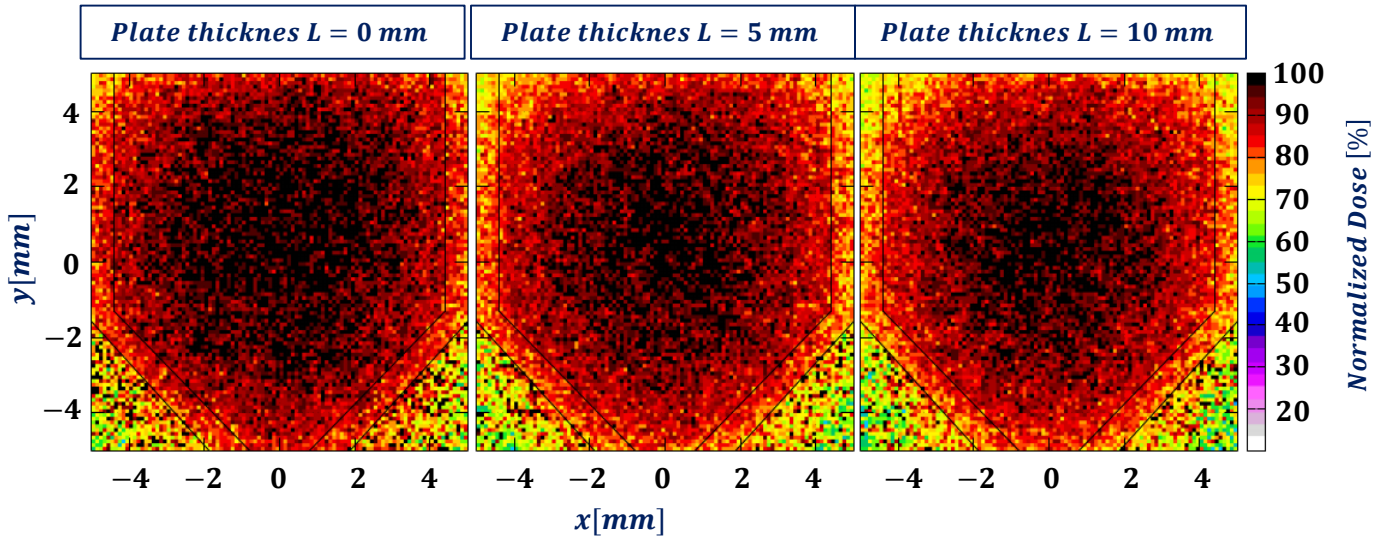
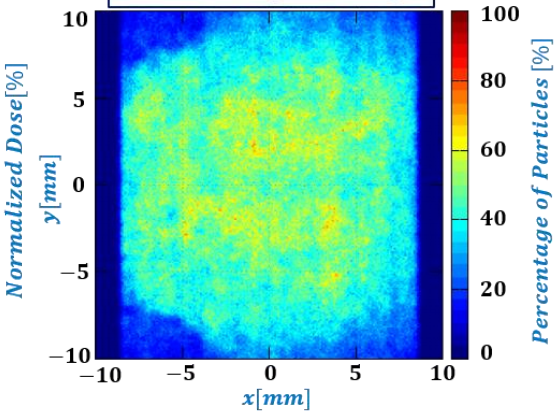
Dose profile on Center of Epp. Tube

Without Gaf. Film in Front of Epp tube.

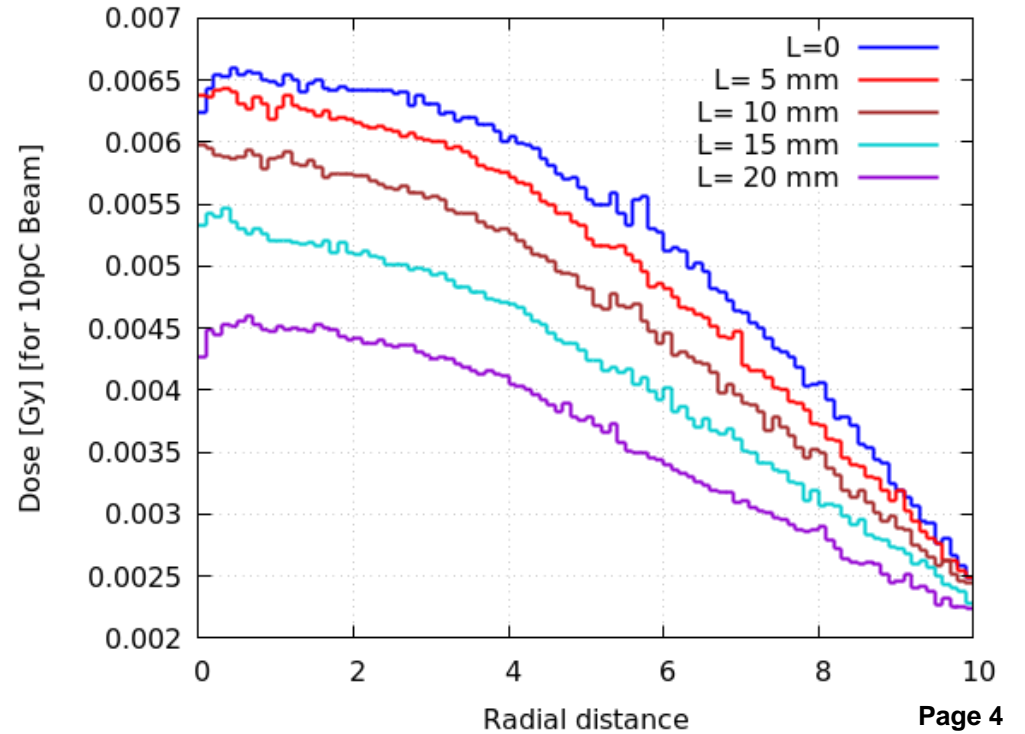
Center of Epp. Tube



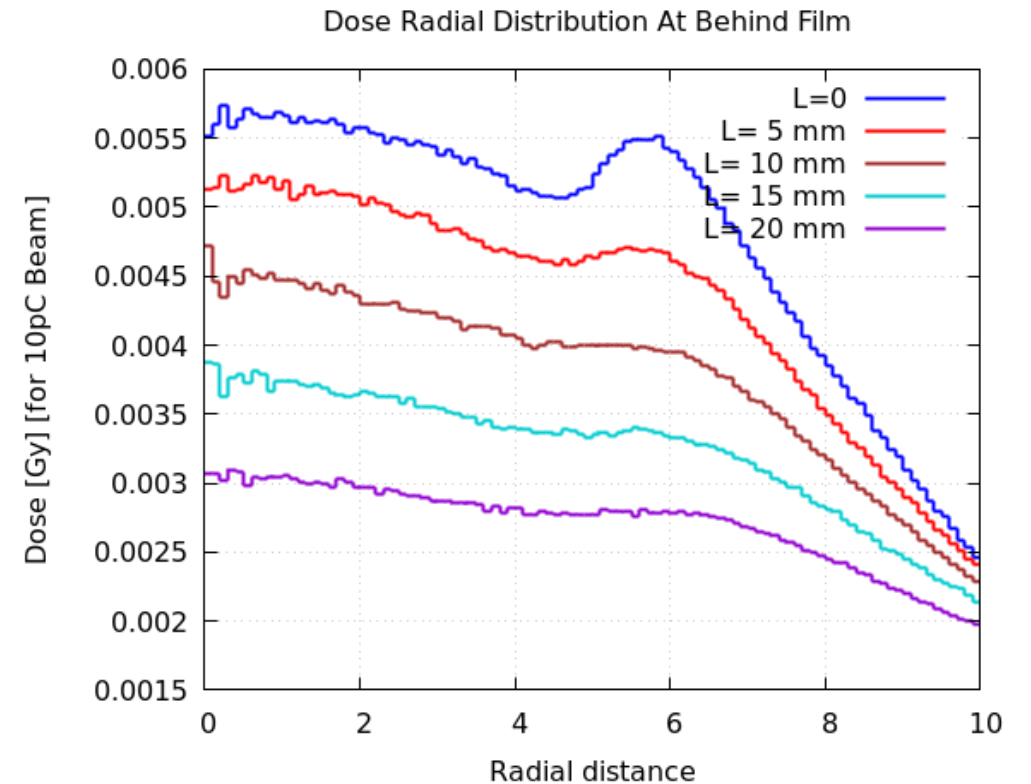
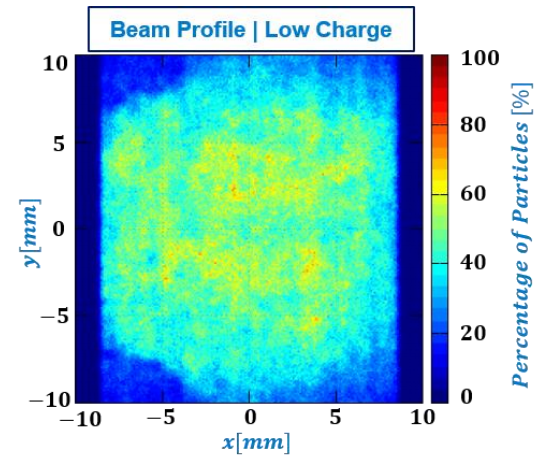
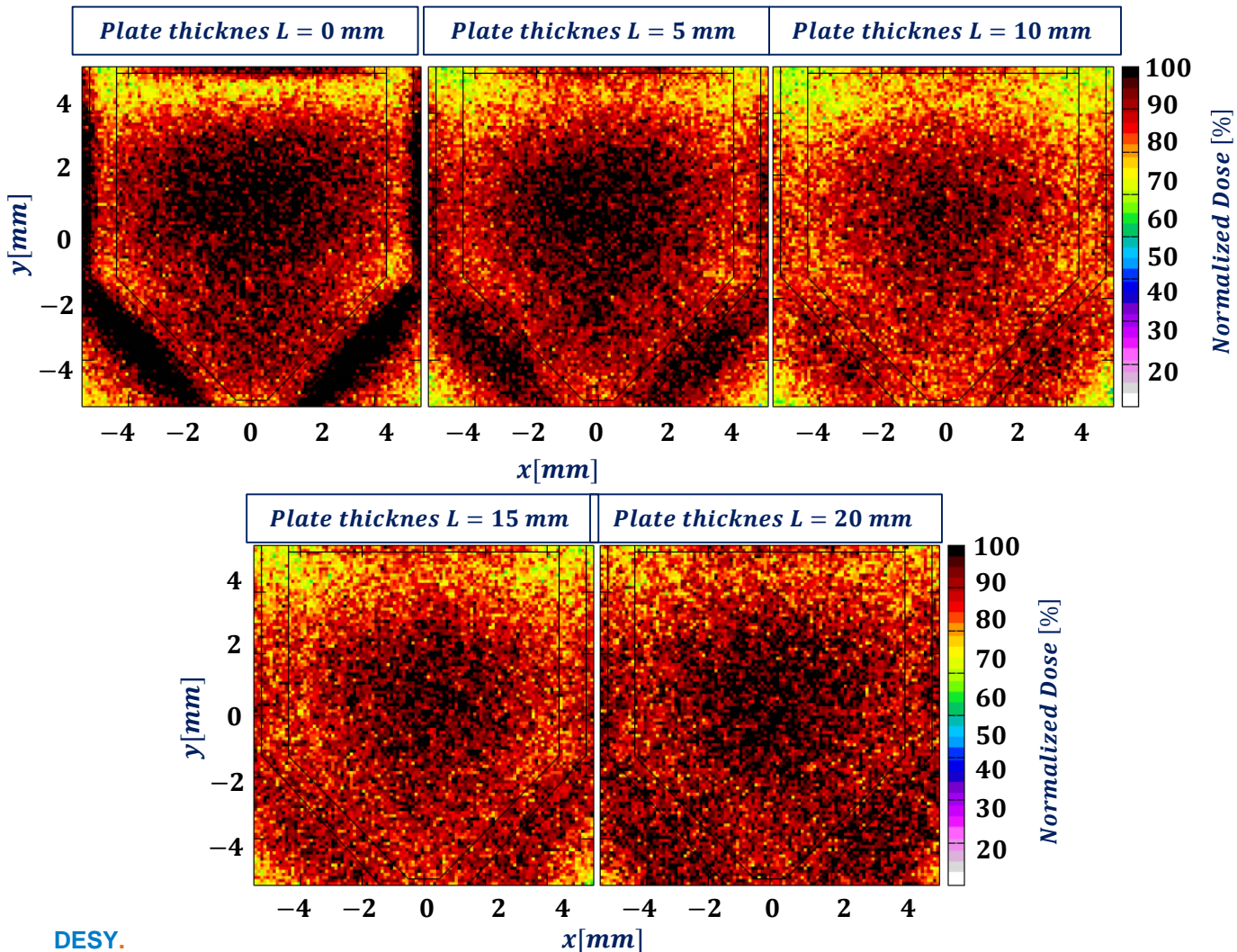
Beam Profile | Low Charge



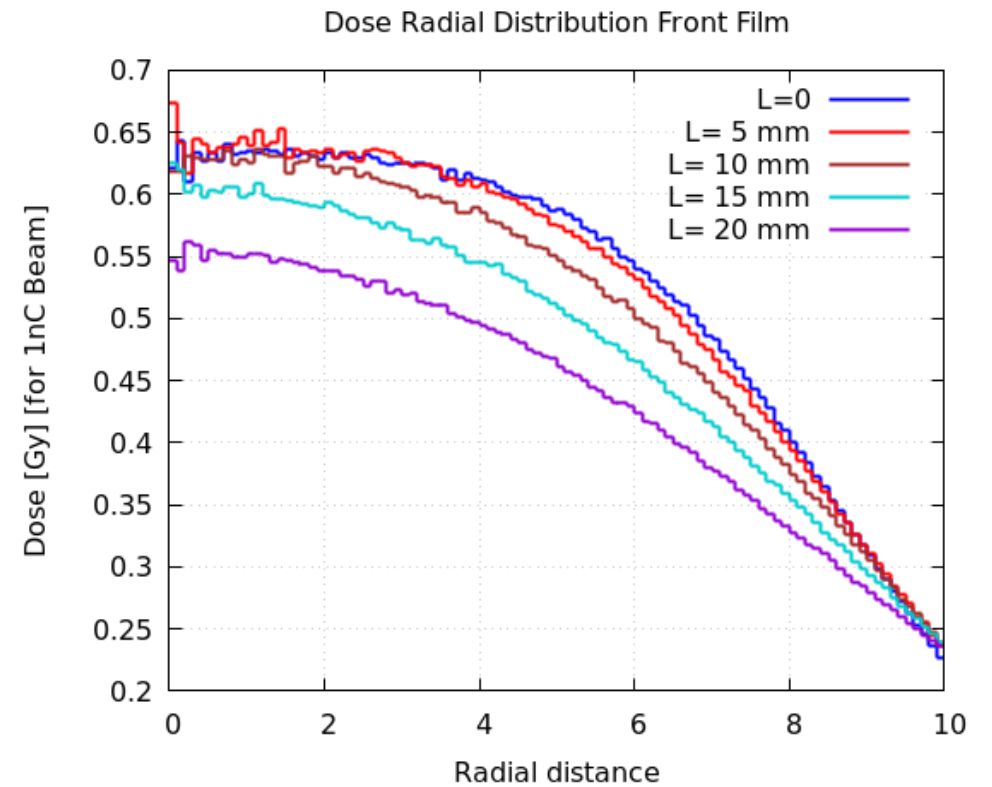
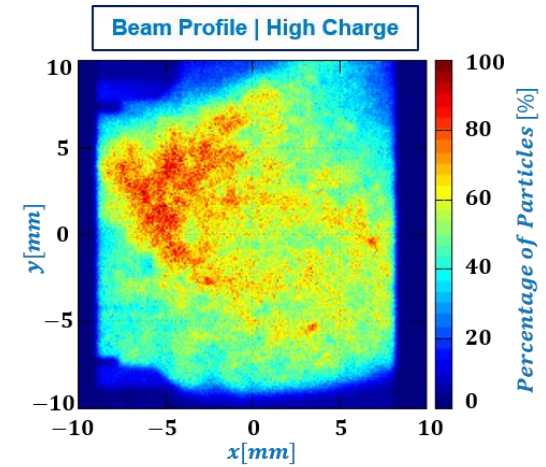
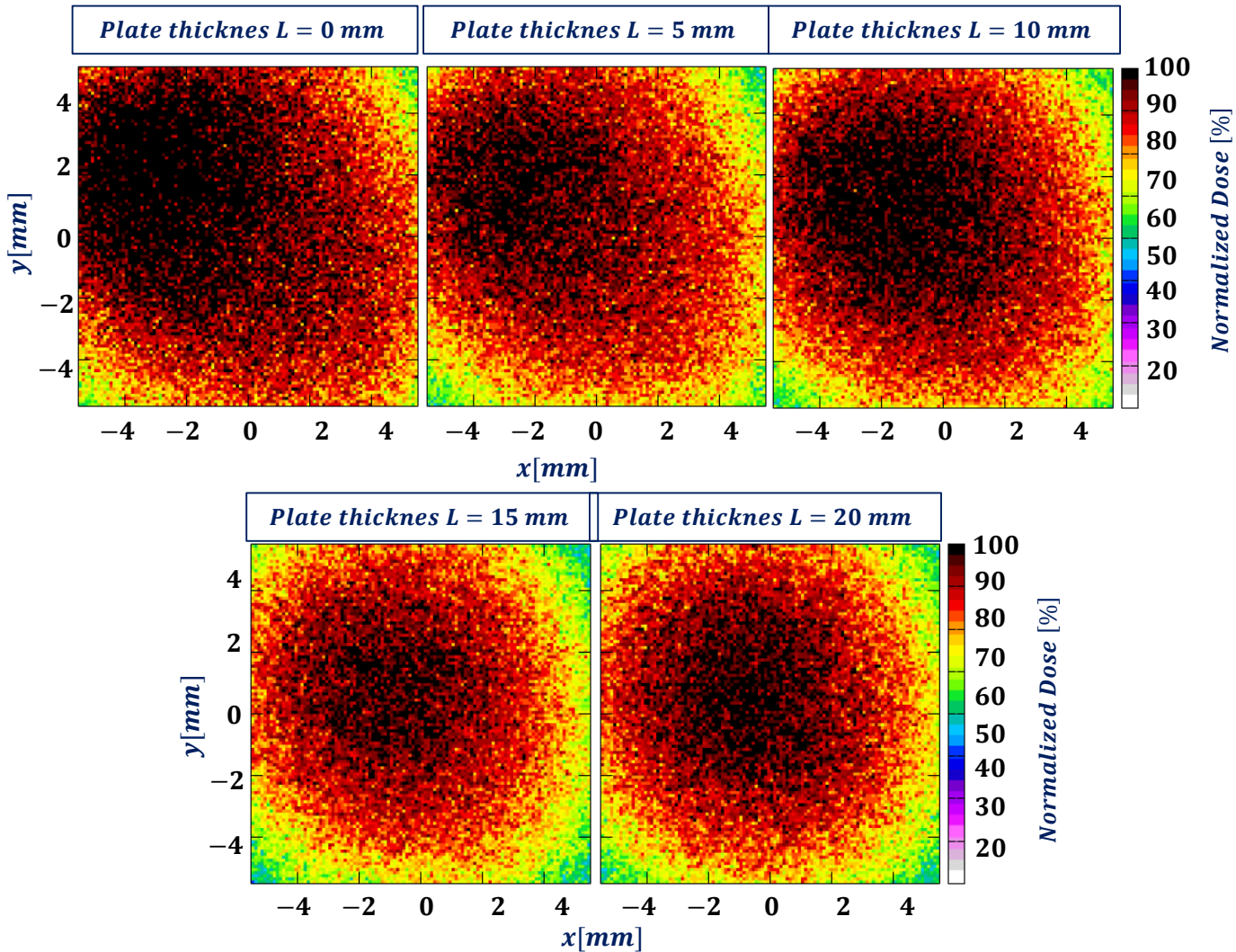
Dose Radial Distribution Epp. Tube Center



Dose profile at behind film

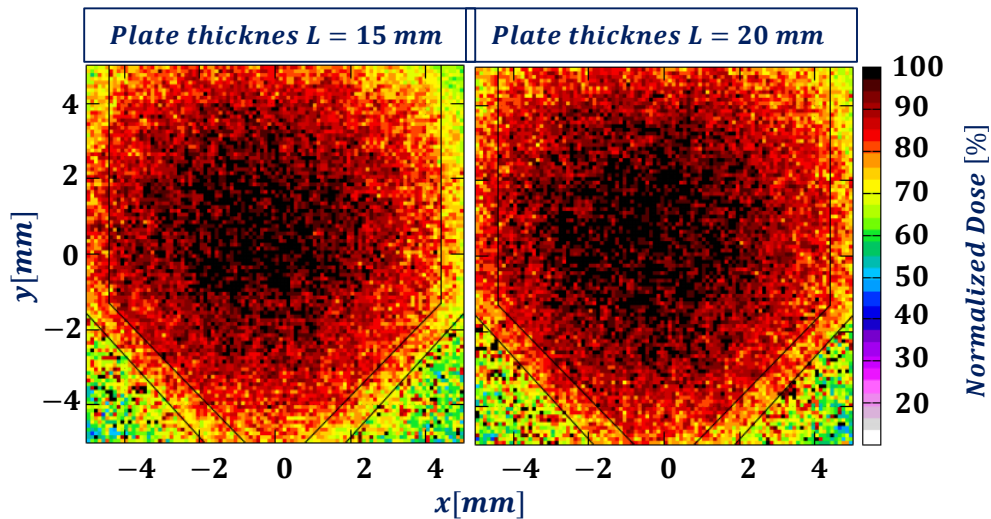
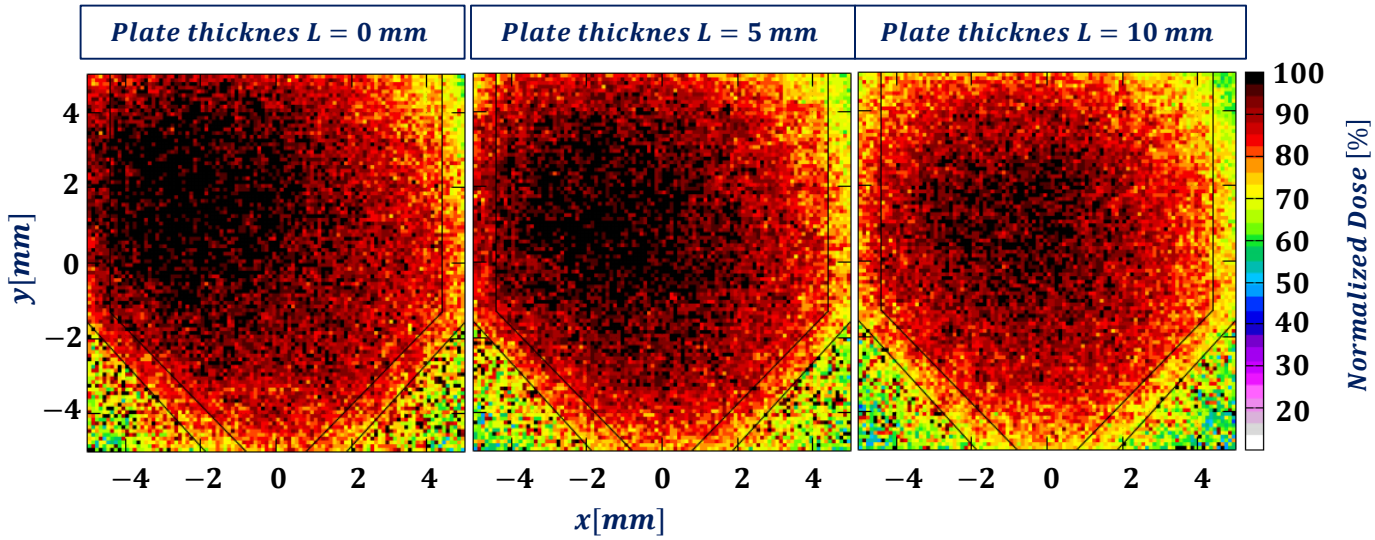
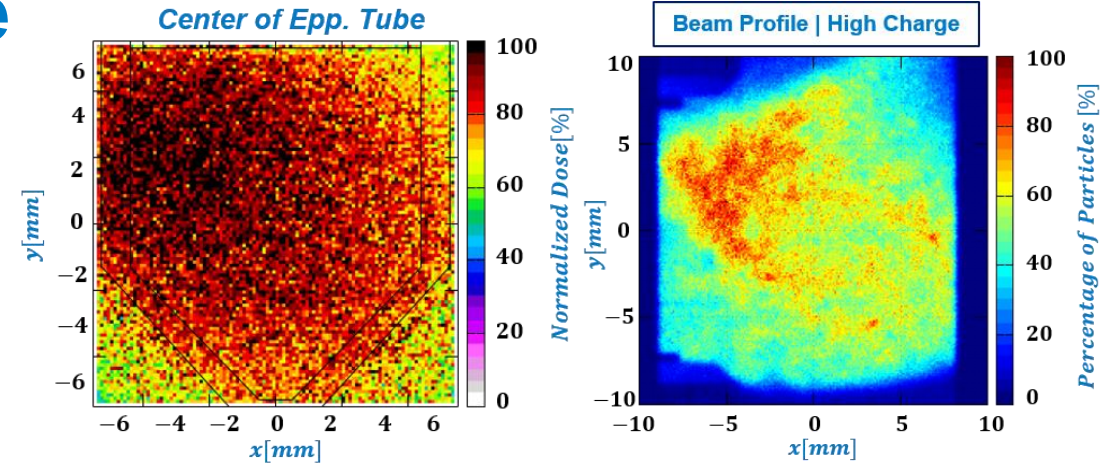


Dose profile at front film

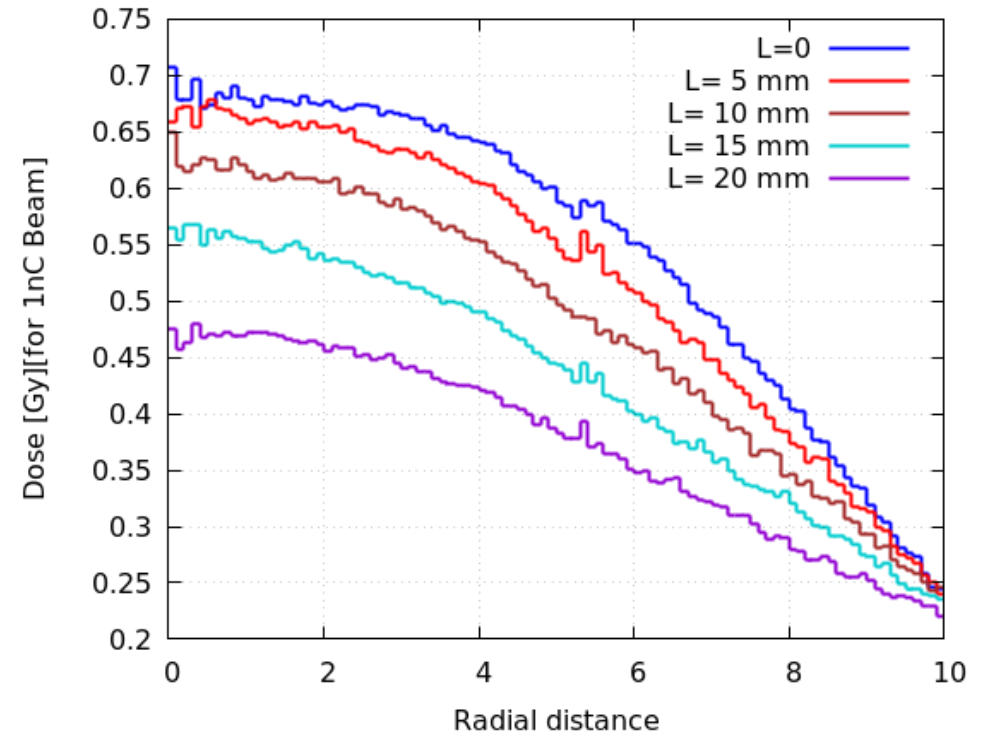


Dose profile on Center of Epp. Tube

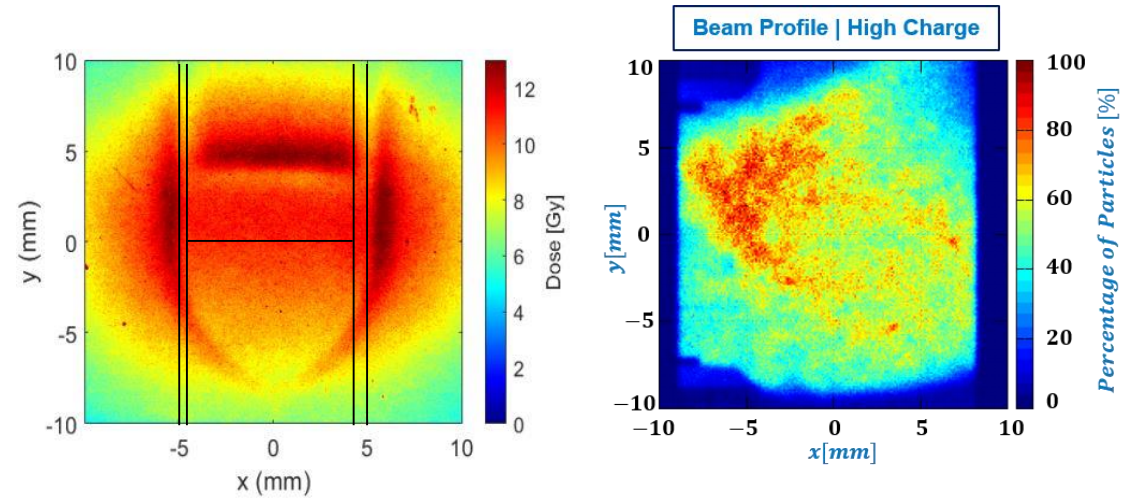
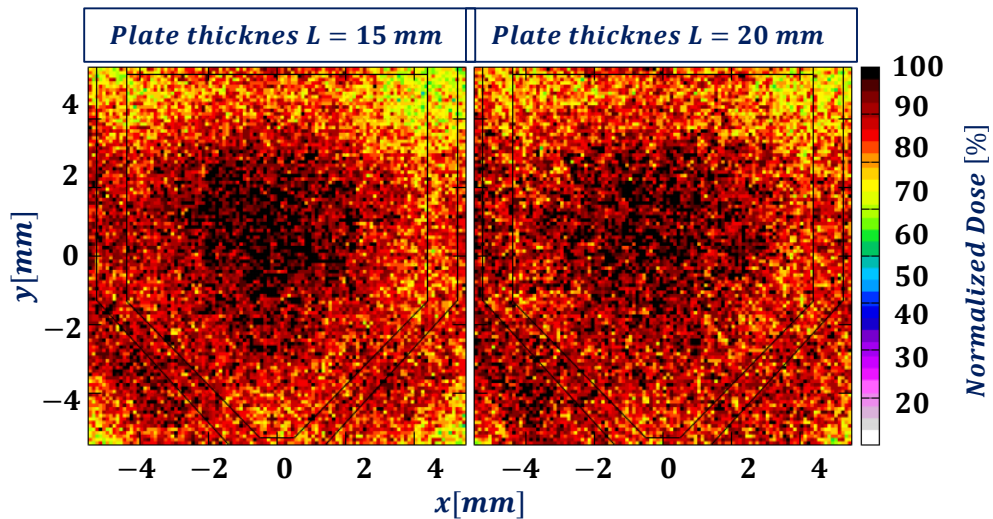
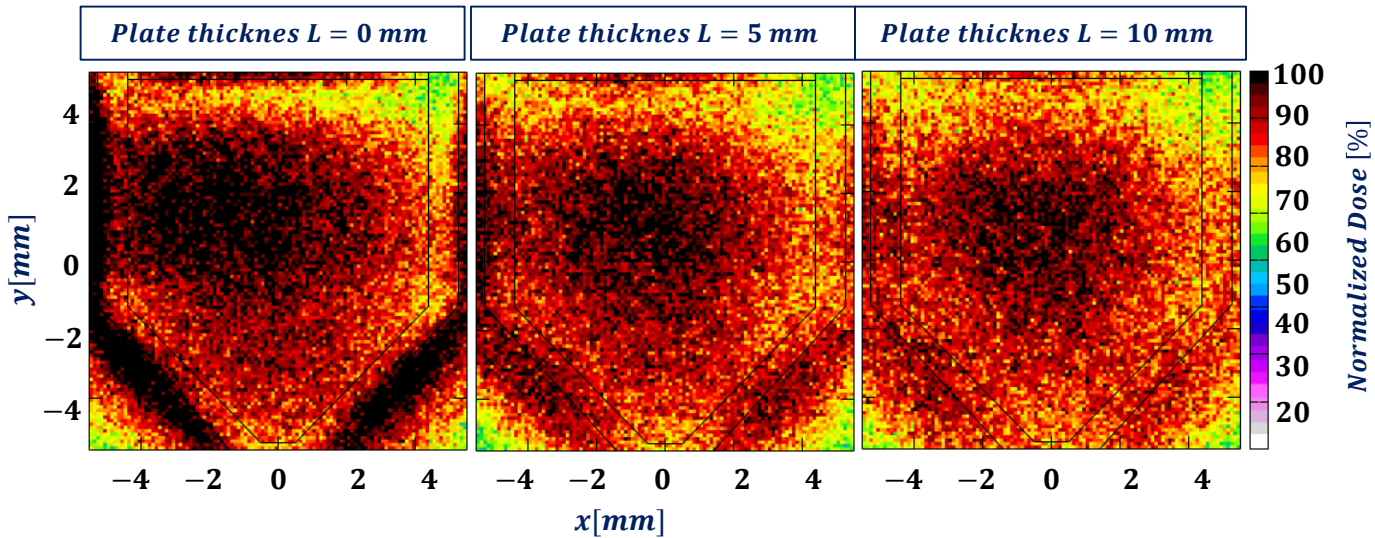
Without Gaf. Film in Front of Epp. tube.



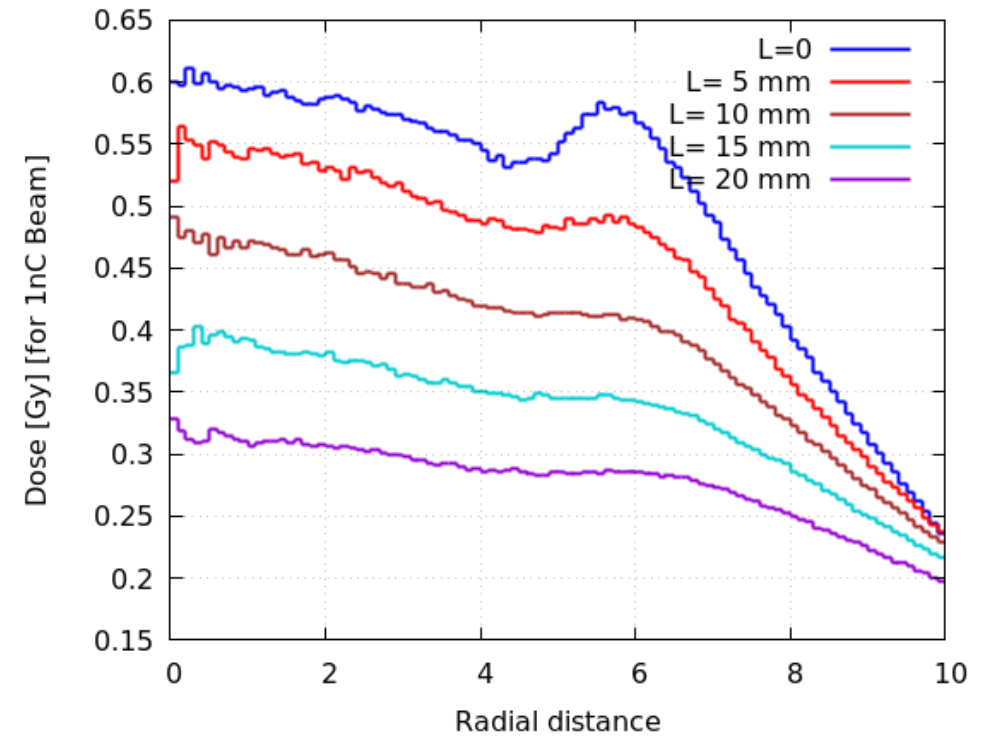
Dose Radial Distribution Epp. Tube Center



Dose profile at behind film



Dose Radial Distribution At Behind Film



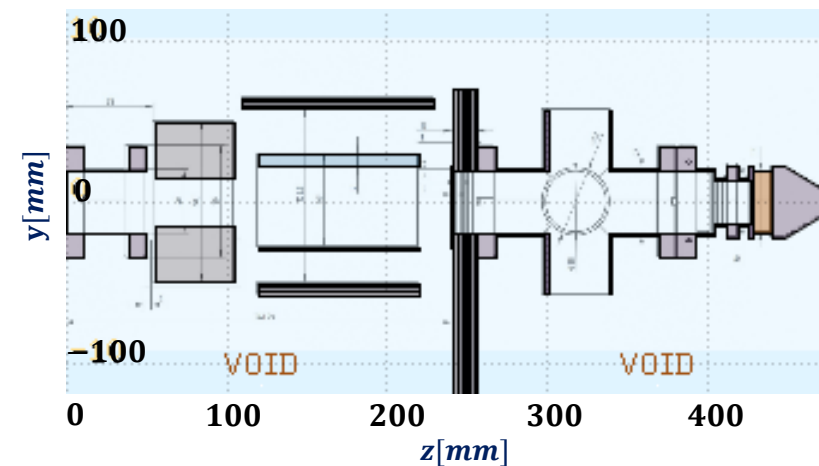
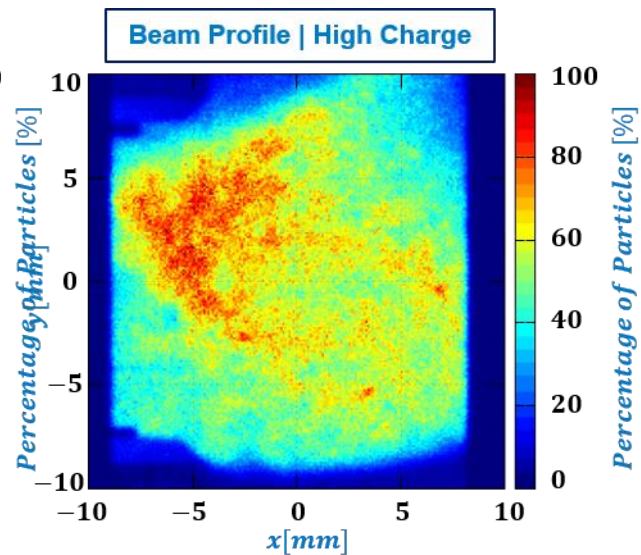
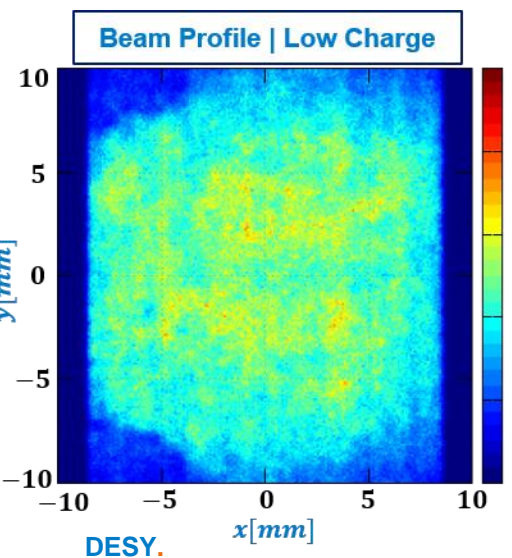
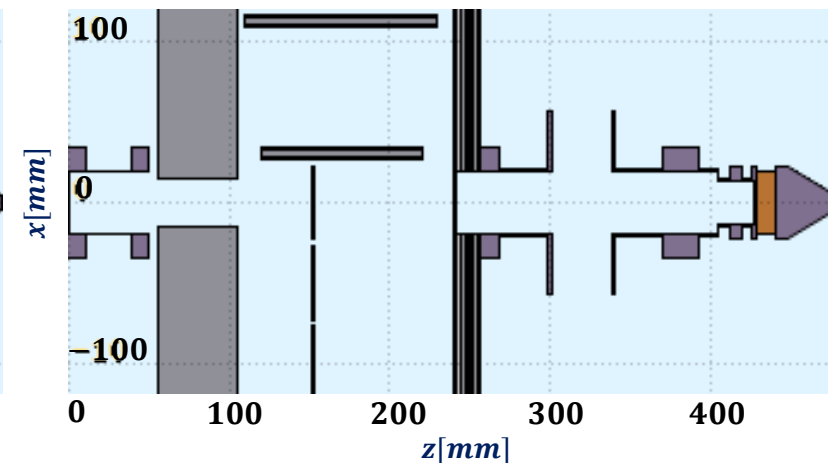
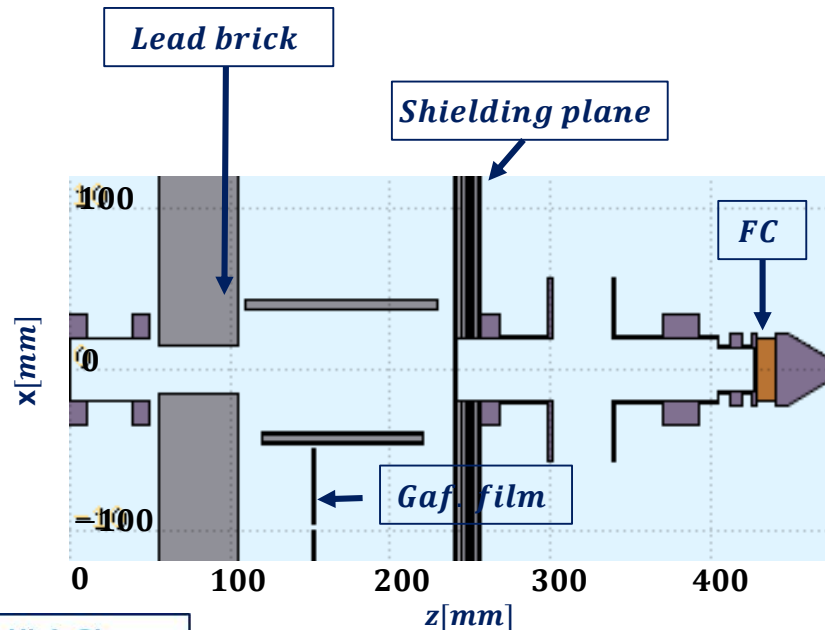
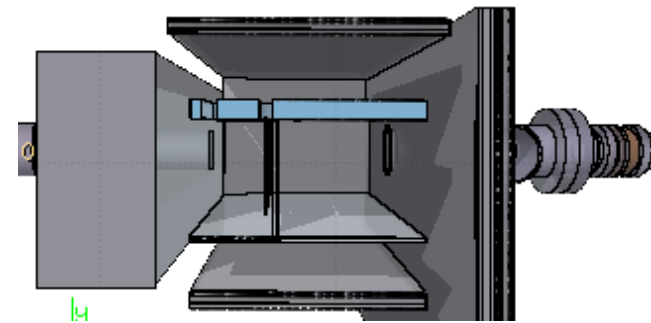
Backscattering

Simulation Setup

Schematic representation

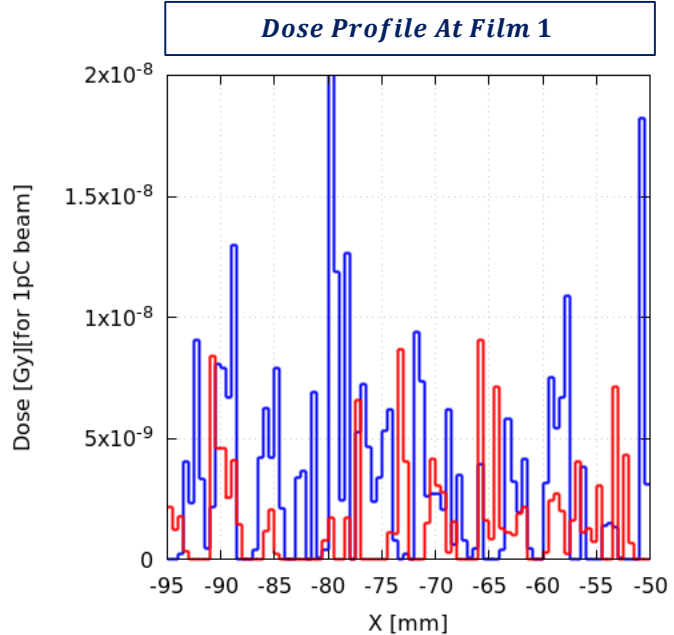
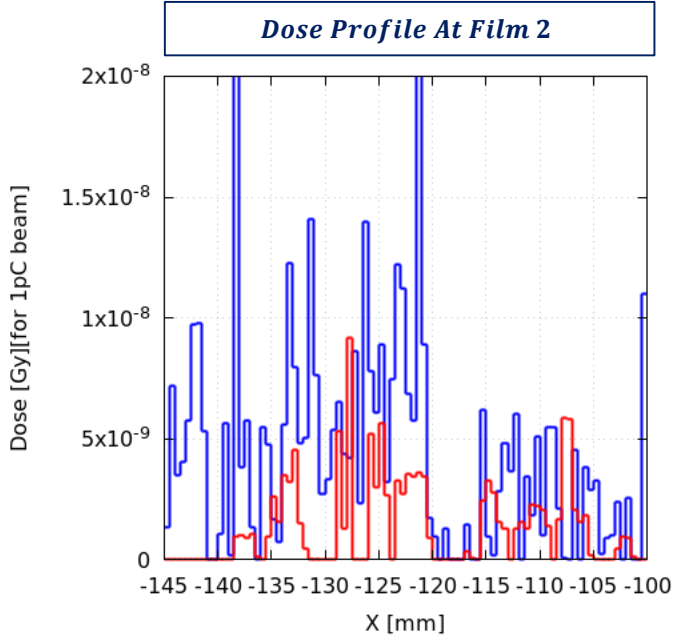
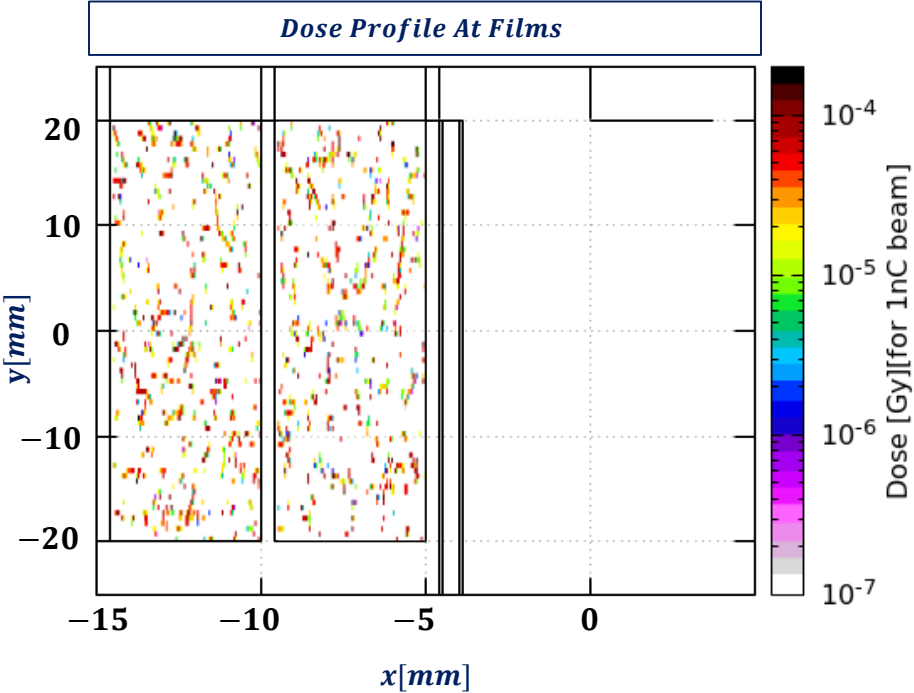
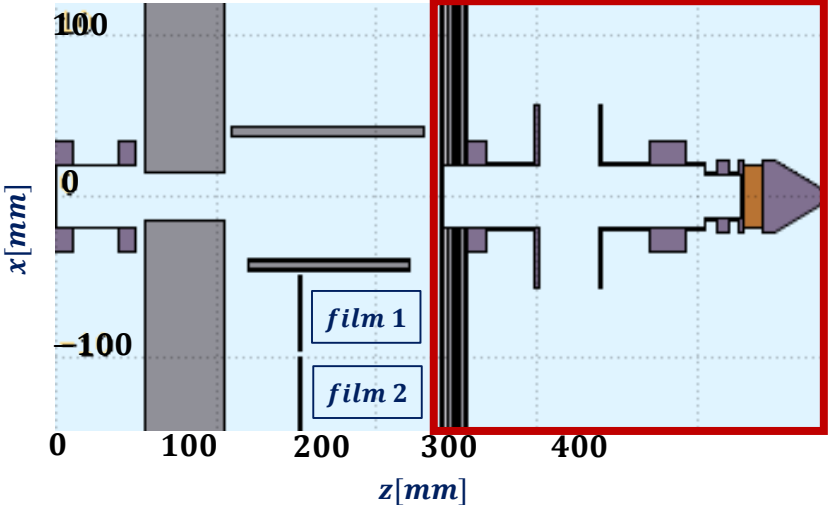
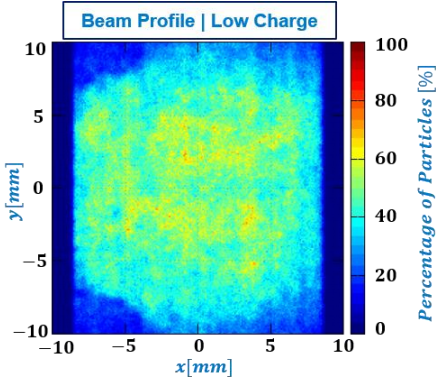
Geometry setting:

- Lead brick with
 - a thick of **50 mm**.
 - a **hole** diameter of **30 mm**.
- Distance from window to
 - Gaf. film is **150 mm**.
 - FC is **430 mm**



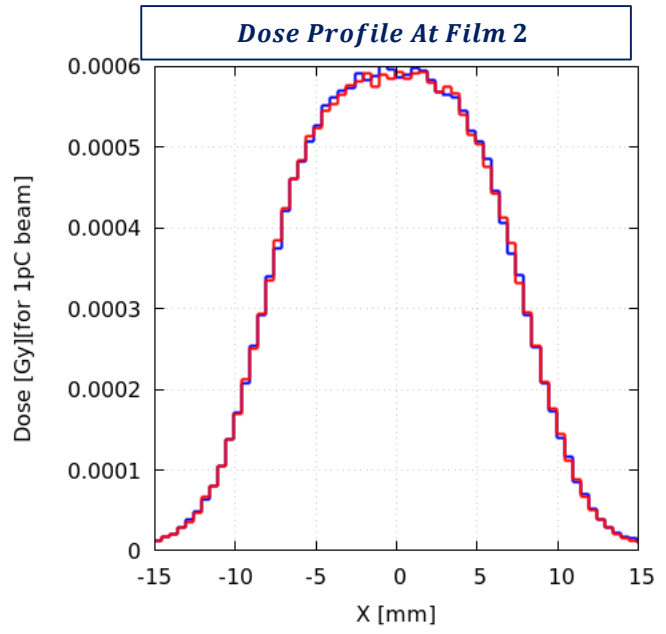
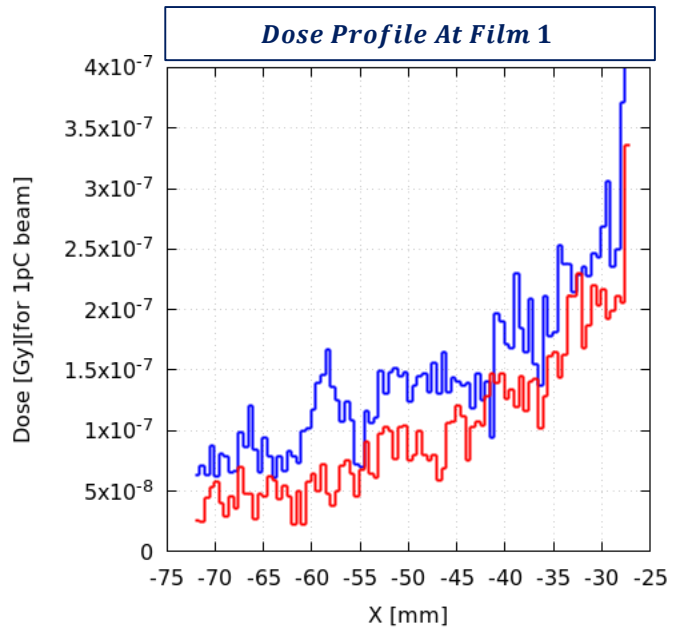
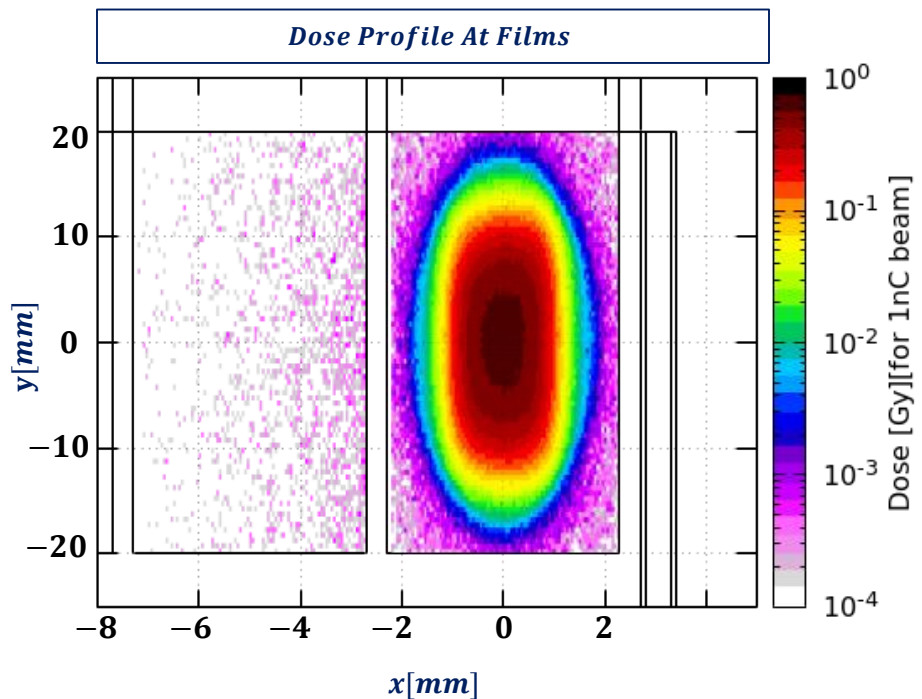
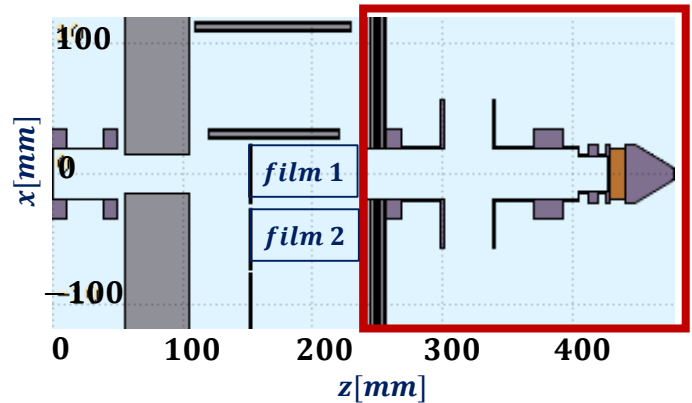
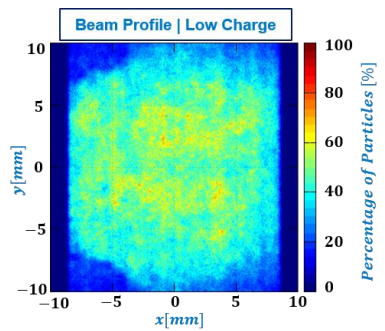
Dose profile on Gaf. Film

During the beam operation



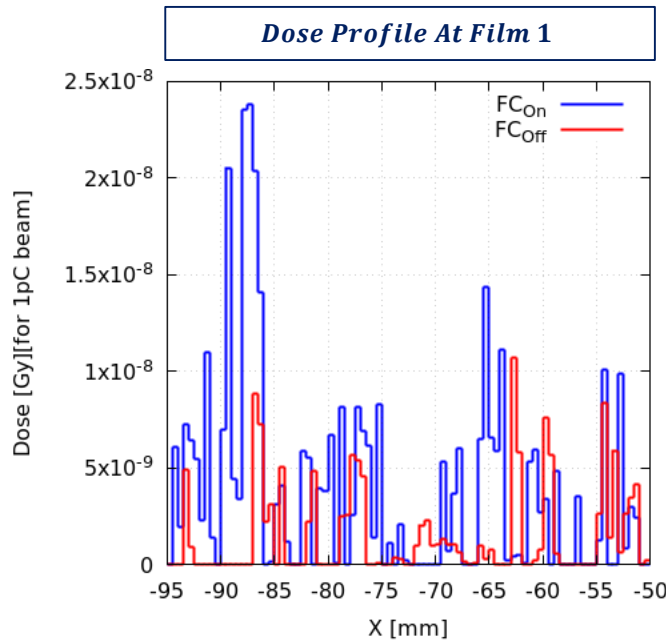
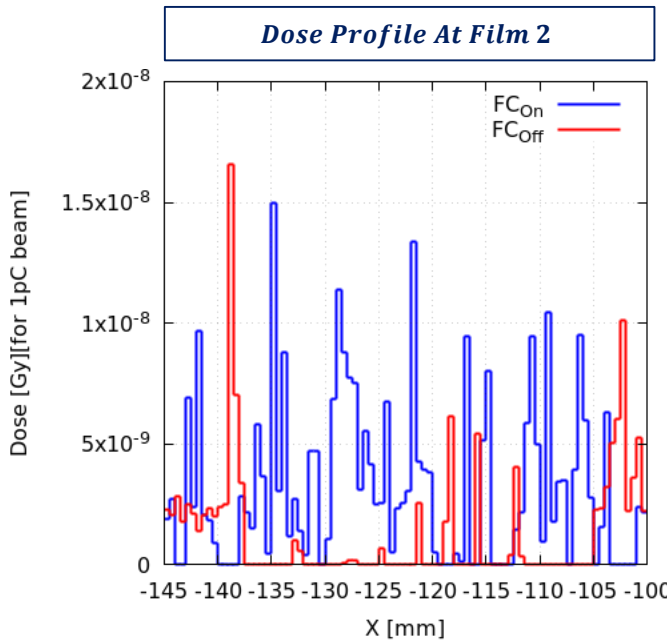
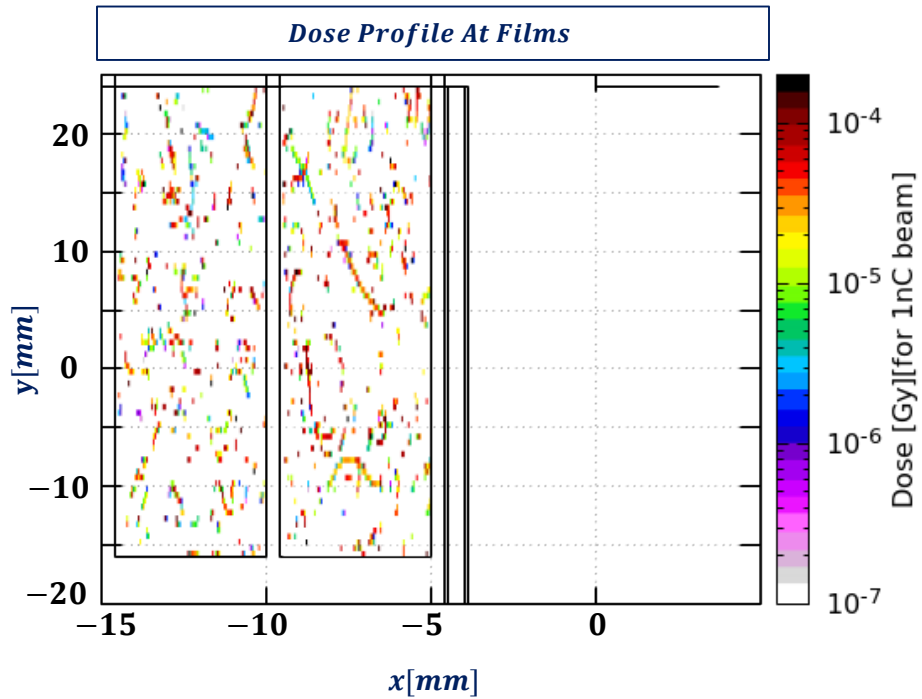
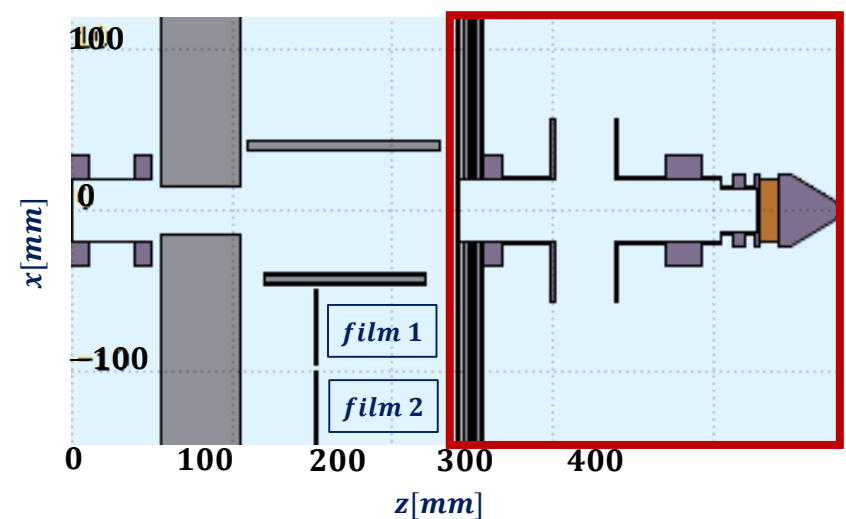
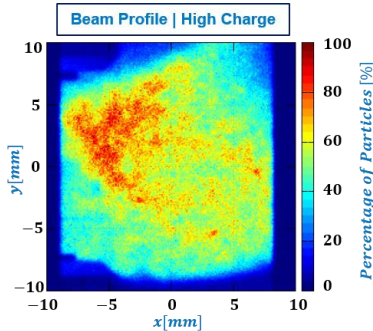
Dose profile on Gaf. Film

During the irradiation



Dose profile on Gaf. Film

During the beam operation



Dose profile on Gaf. Film

During the irradiation

