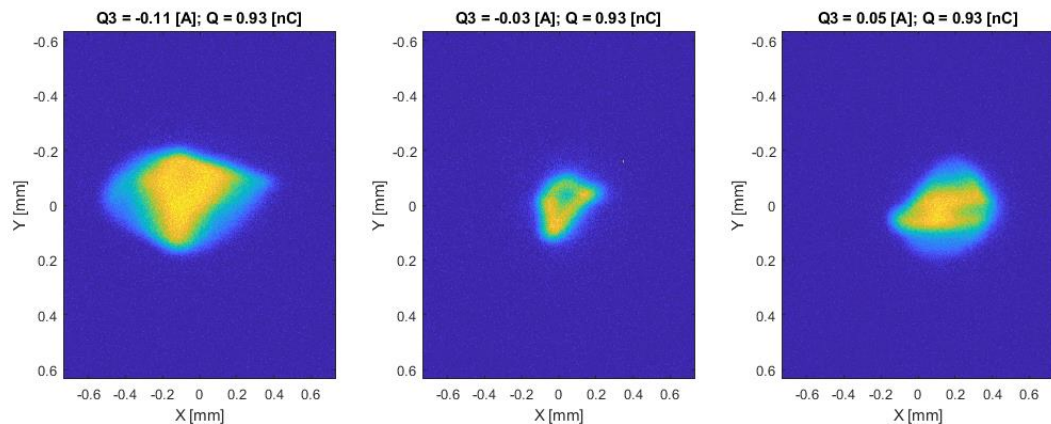
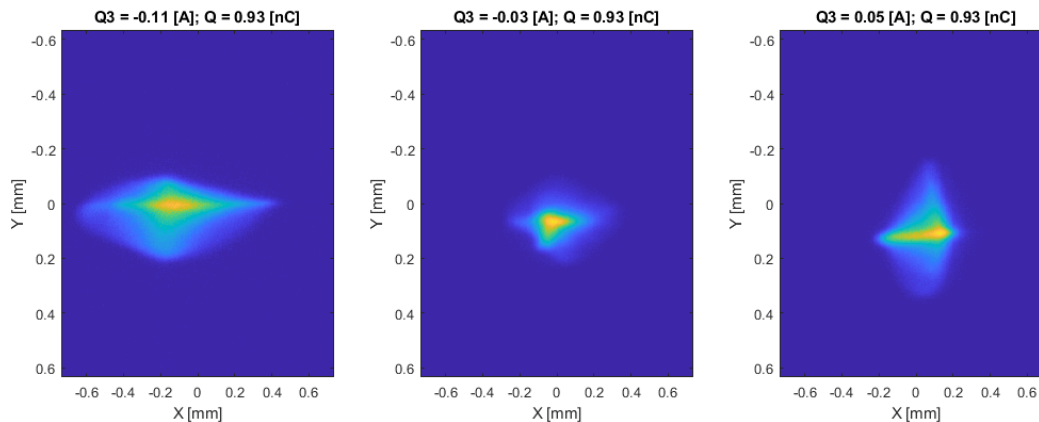


- In the measurements of the scintillators nonproportionality the High.Q3 quad has been used to focus the beam
- Below are the results of LYSO and GAGG scintillators. The 3 pictures have been taken at the same machine settings.

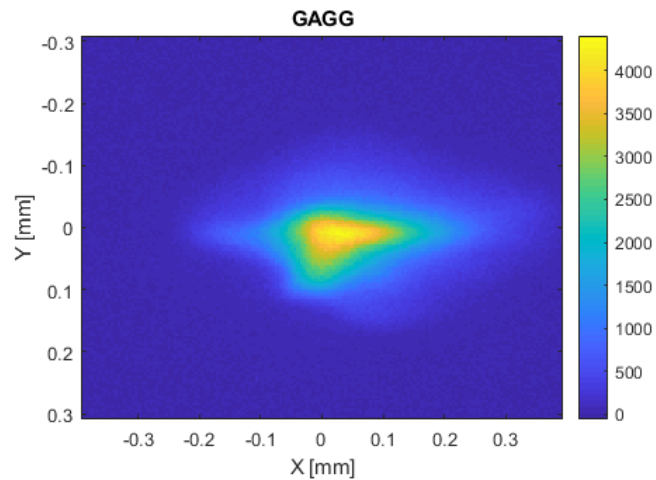
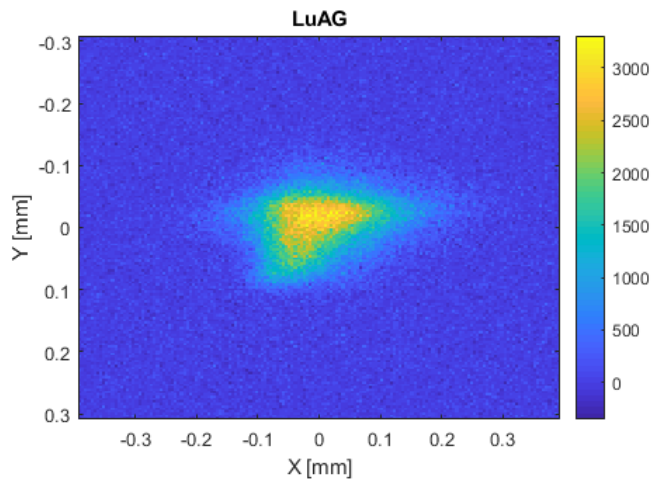
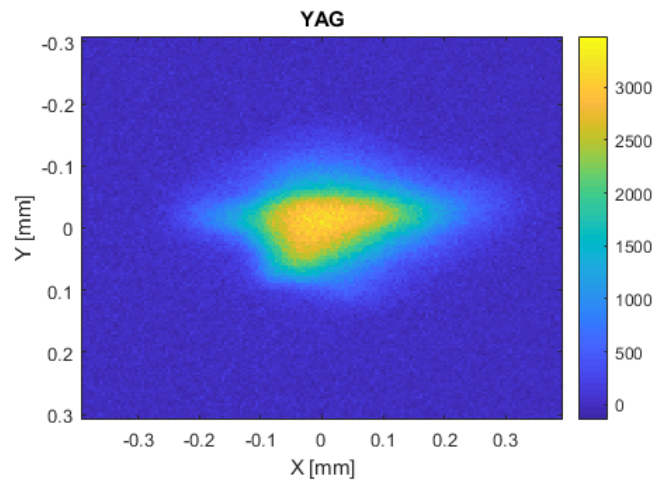
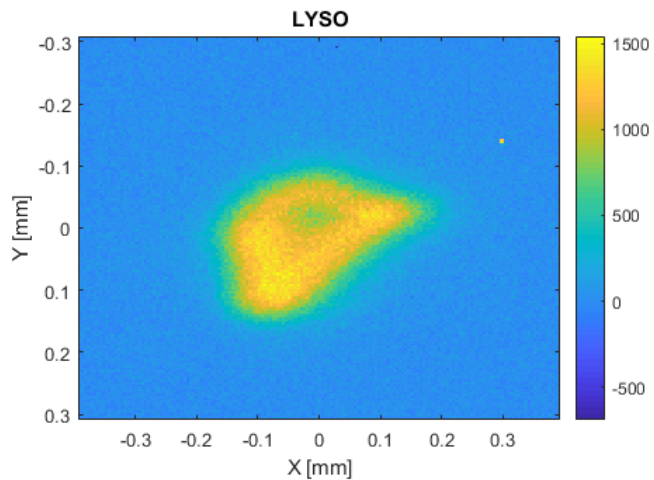


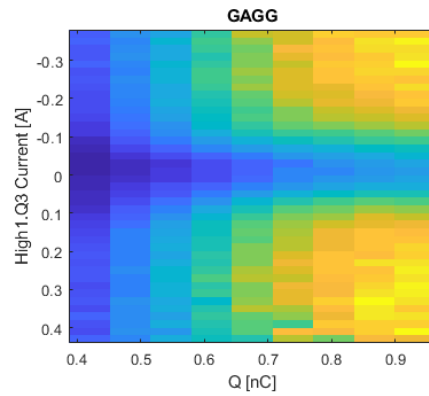
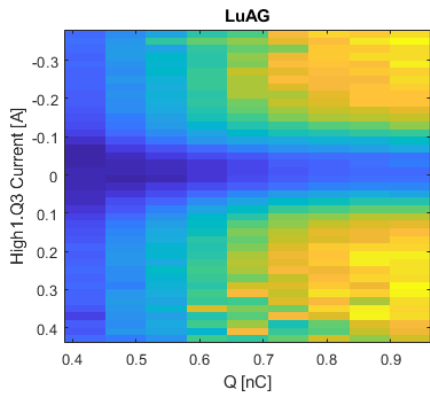
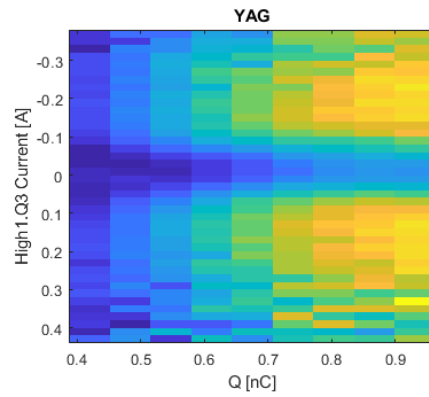
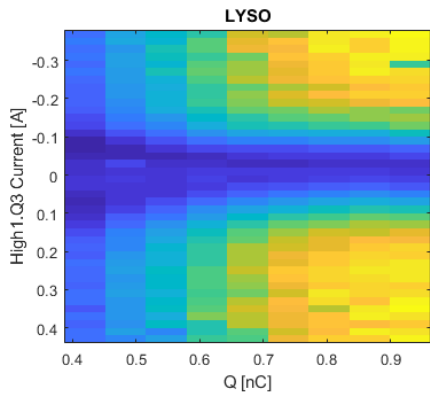
- **LYSO** Results.
- The middle picture is the most focused beam.
- The right and left are slightly defocused ones.
- One can clearly see the dip in the central picture.

- **GAGG** Results.
- Absolutely the same settings of the machine as with LYSO one.
- There is no dip at all.

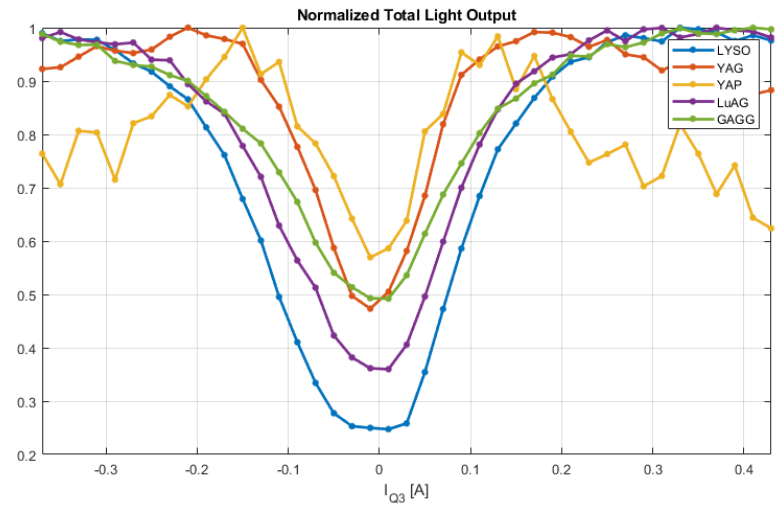


- Here is the comparison of the pictures from 4 different scintillators.
- All the pictures have been taken under the same machine conditions.





Comparison of the total light output from the scintillators



- High Charge Density – *FOCUSED* beam
- Low Charge Density – *DEFOCUSED* beam

