

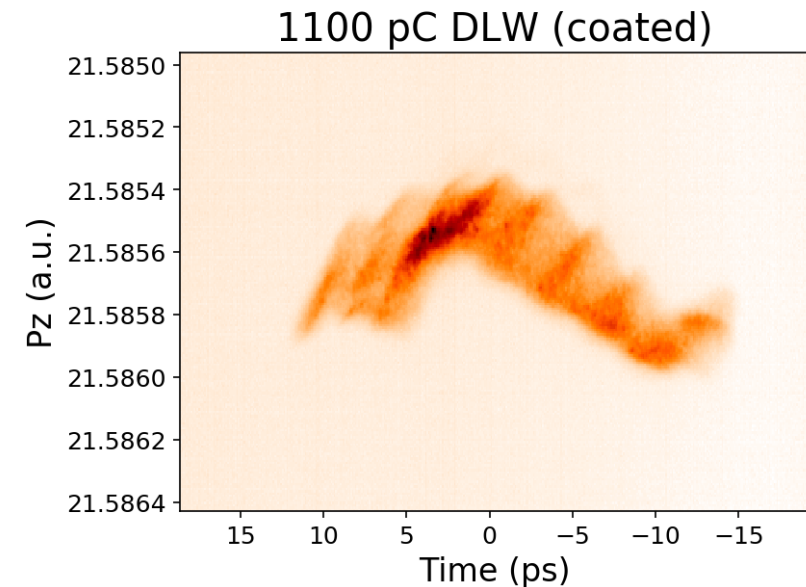
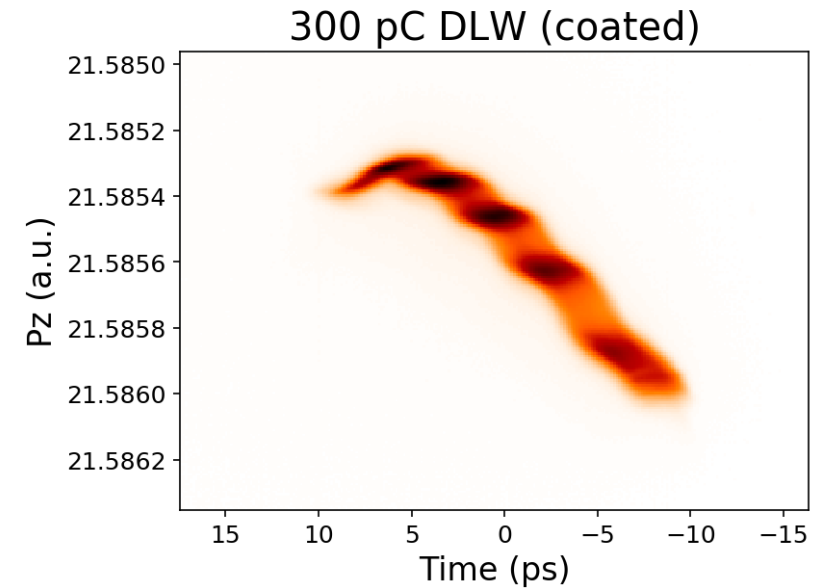
# Short DLW experiment results

## Longitudinal phase space

Georgi Georgiev  
20 May 2021

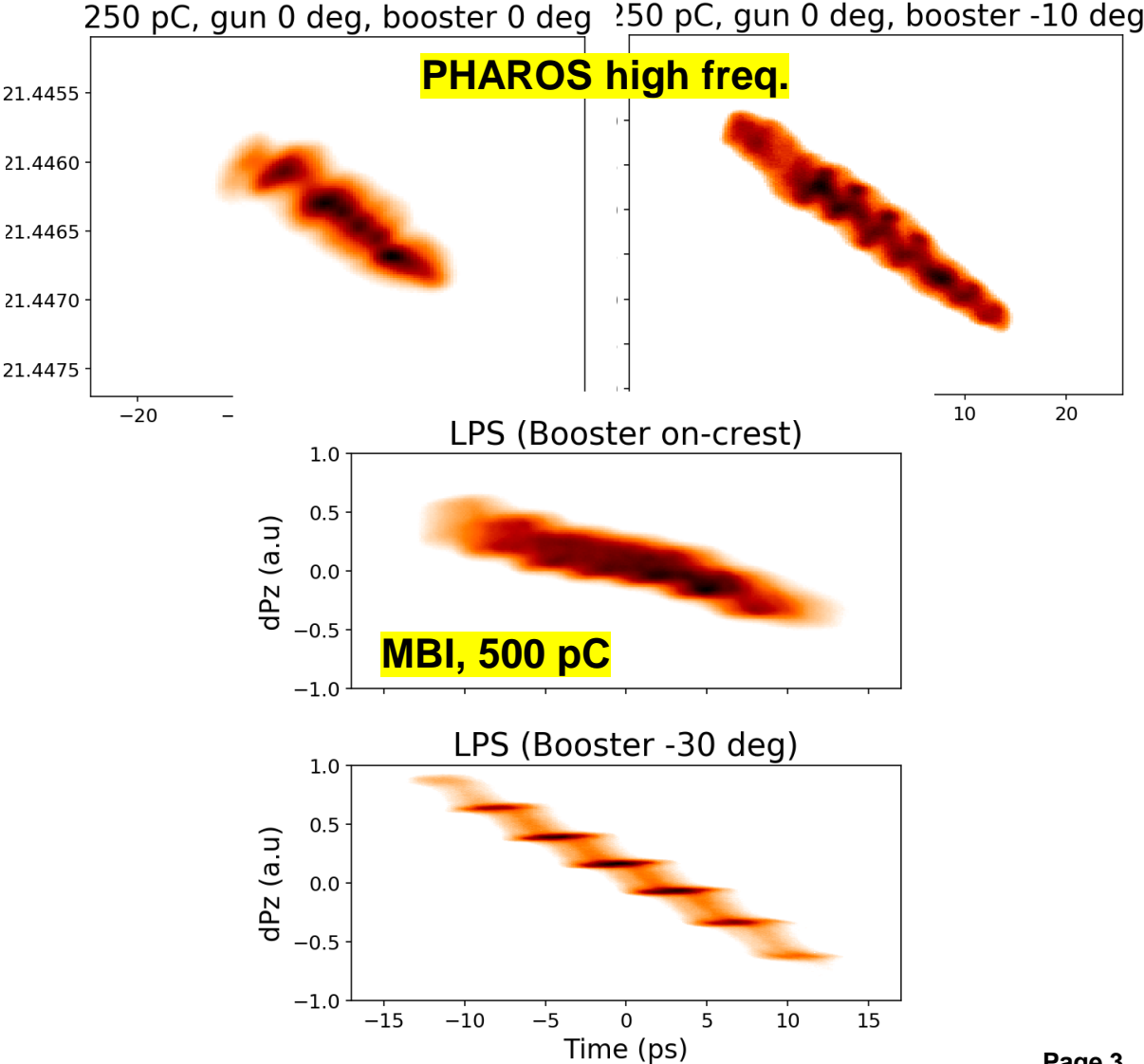
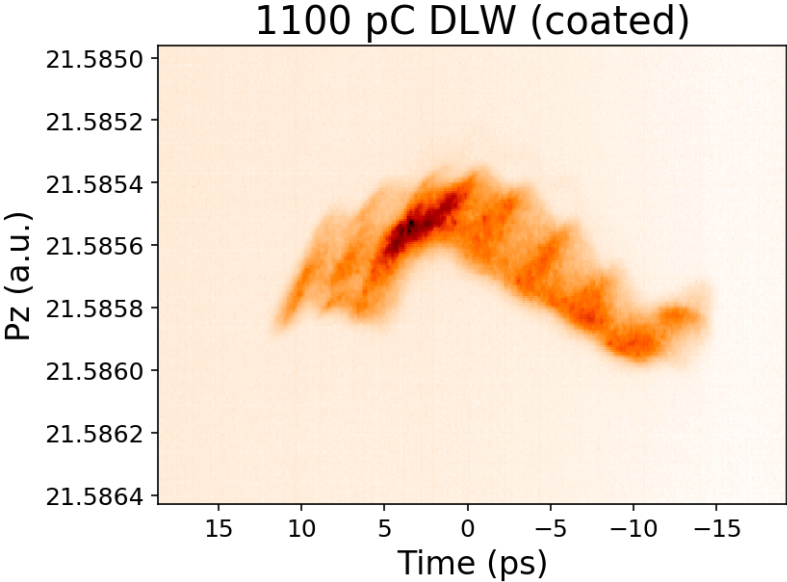
# THz modulations with DLW

- Redoing of 2017 program
- 1.1 nC beam centered in tubes in Low.Scr3
  - Giving offset of tube + steerers – possible better alingemnt
- TDS beam current modulations and LPS taken
  - Vertical slit for better time-resolution
- Scan charges Low.ICT : 1.1 nC, 600 pC, 300 pC
  - Modulations in all tested cases
- TODO: Booster phase scan



# Comparison to photocathode laser modulated pulse

- Modulations from DLW well visible
  - Even with 1.1 nC charge!
  - PC laser option requires booster off-crest
- Modulations with higher beam charge
  - Beam loss limitation



# Next

- DLW LPS – booster phase scan

**Thank you**