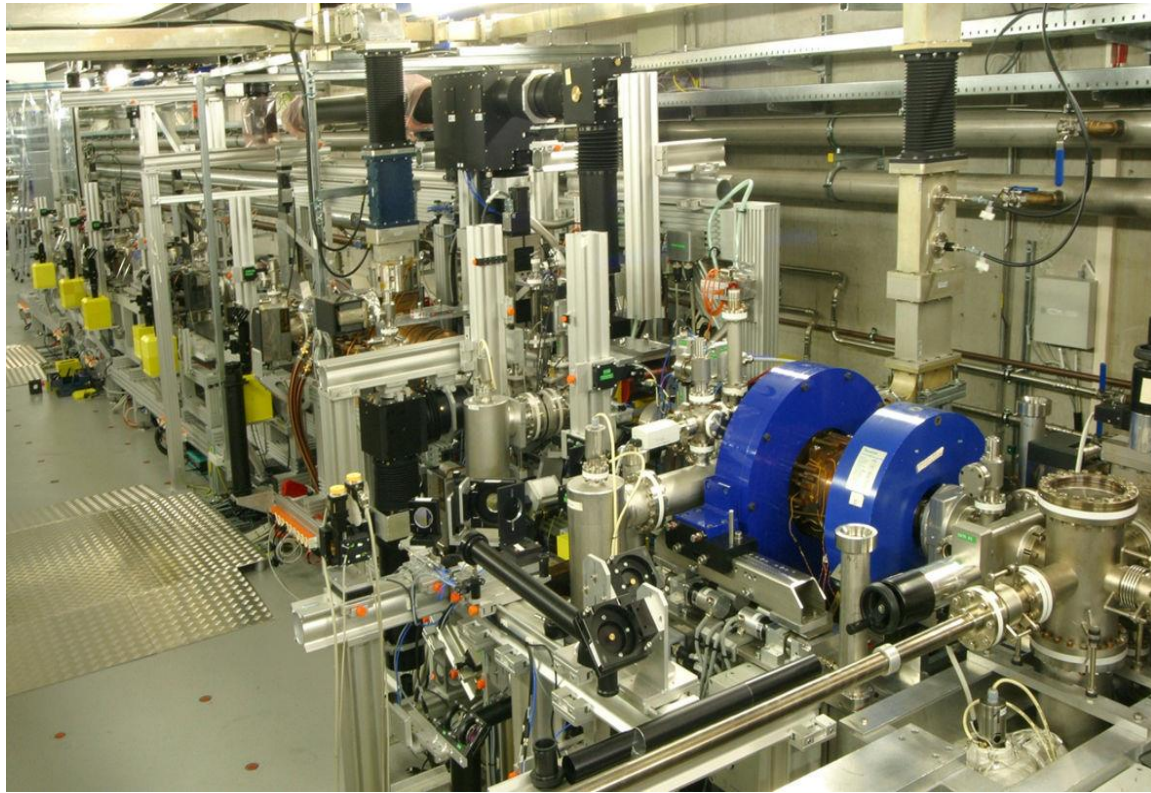


# Solenoid focusing at PITZ

Gulnur Kantay  
PITZ group  
DESY, Zeuthen  
25/08/2016

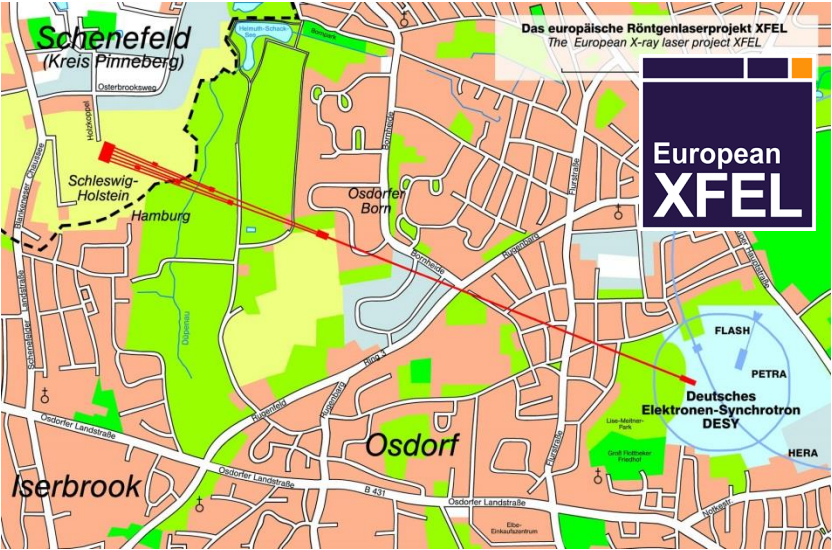


# Introduction

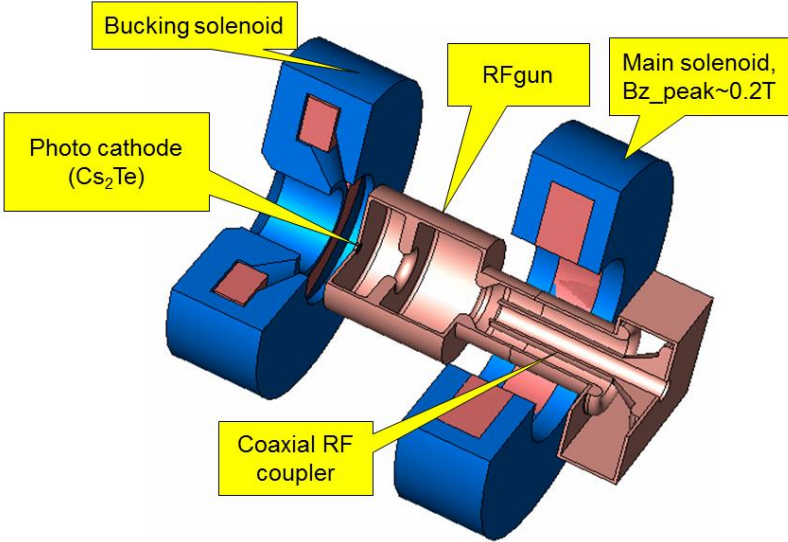
## ➤ Photo Injector Test Facility at DESY, Zeuthen (PITZ)

Main focus of PITZ group:

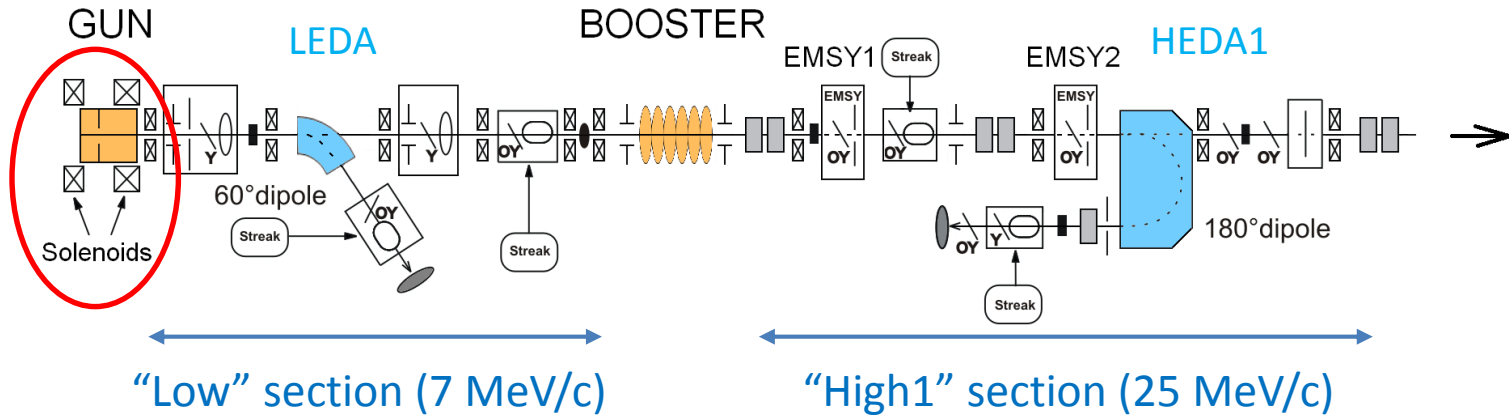
production of electron bunches with extremely small transverse emittance.



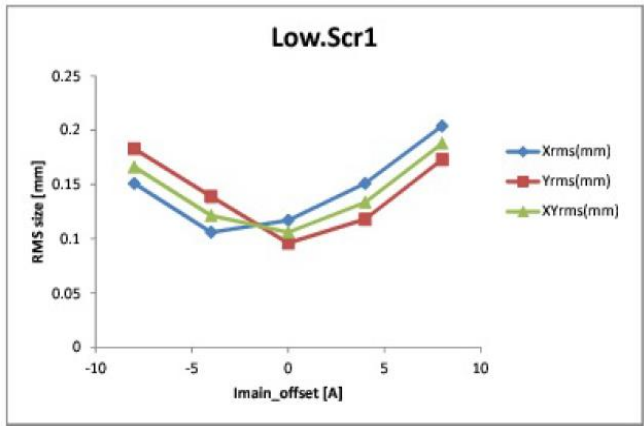
The European XFEL



# PITZ setup



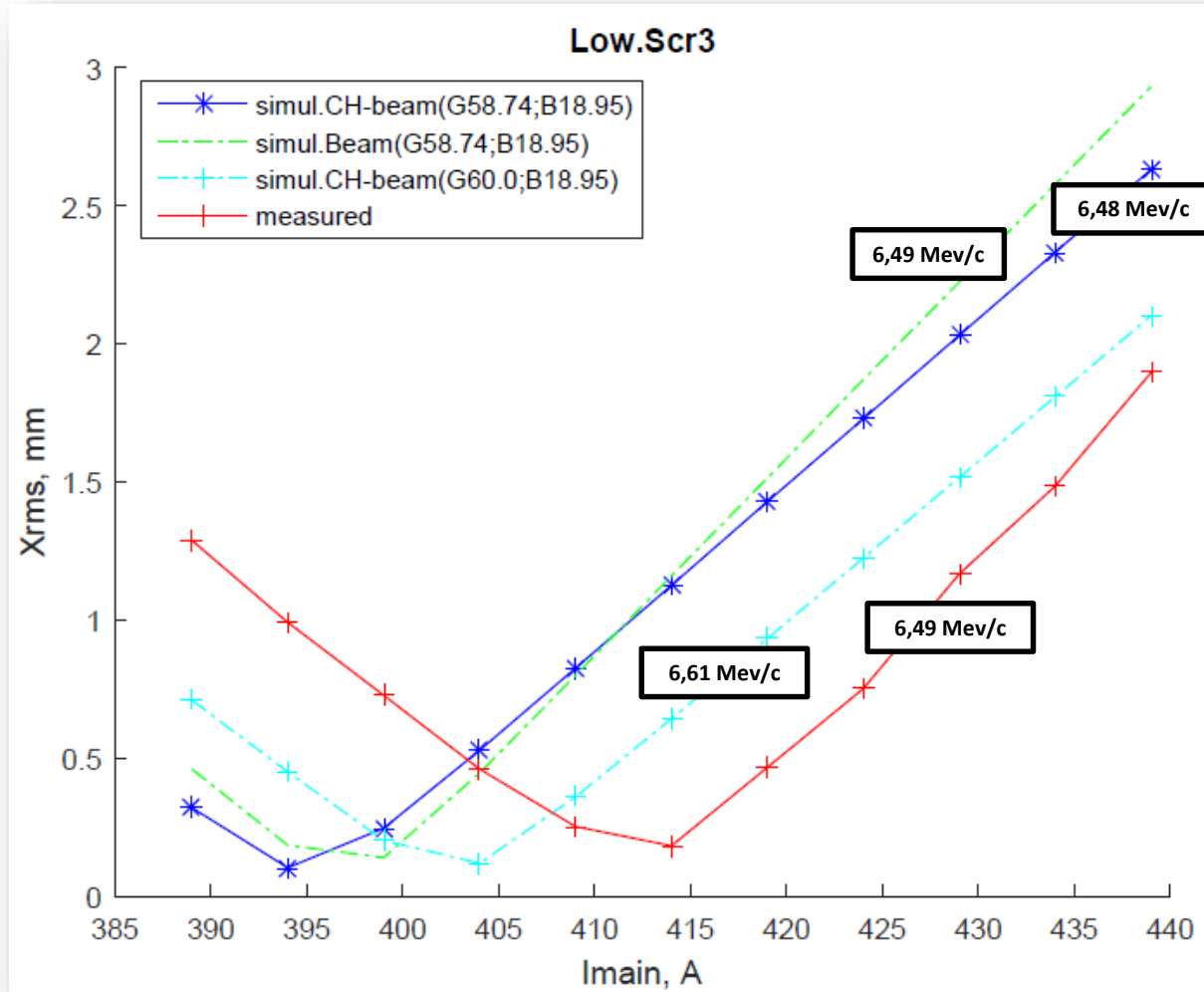
- Investigation of focus size on 6 different screens in Low and High1 section
- Compare experimental focus size and position with simulations (ASTRA code)
- Vary some parameters in simulation to find the source of discrepancies



File: [http://pitzlib.fh.de:8080/PITZelog/data/2016/29/22.07\\_a/2016-07-22T18:04:54-00.ps](http://pitzlib.fh.de:8080/PITZelog/data/2016/29/22.07_a/2016-07-22T18:04:54-00.ps)



# 1<sup>st</sup> Experiment



# Thank you for your attention! =)

