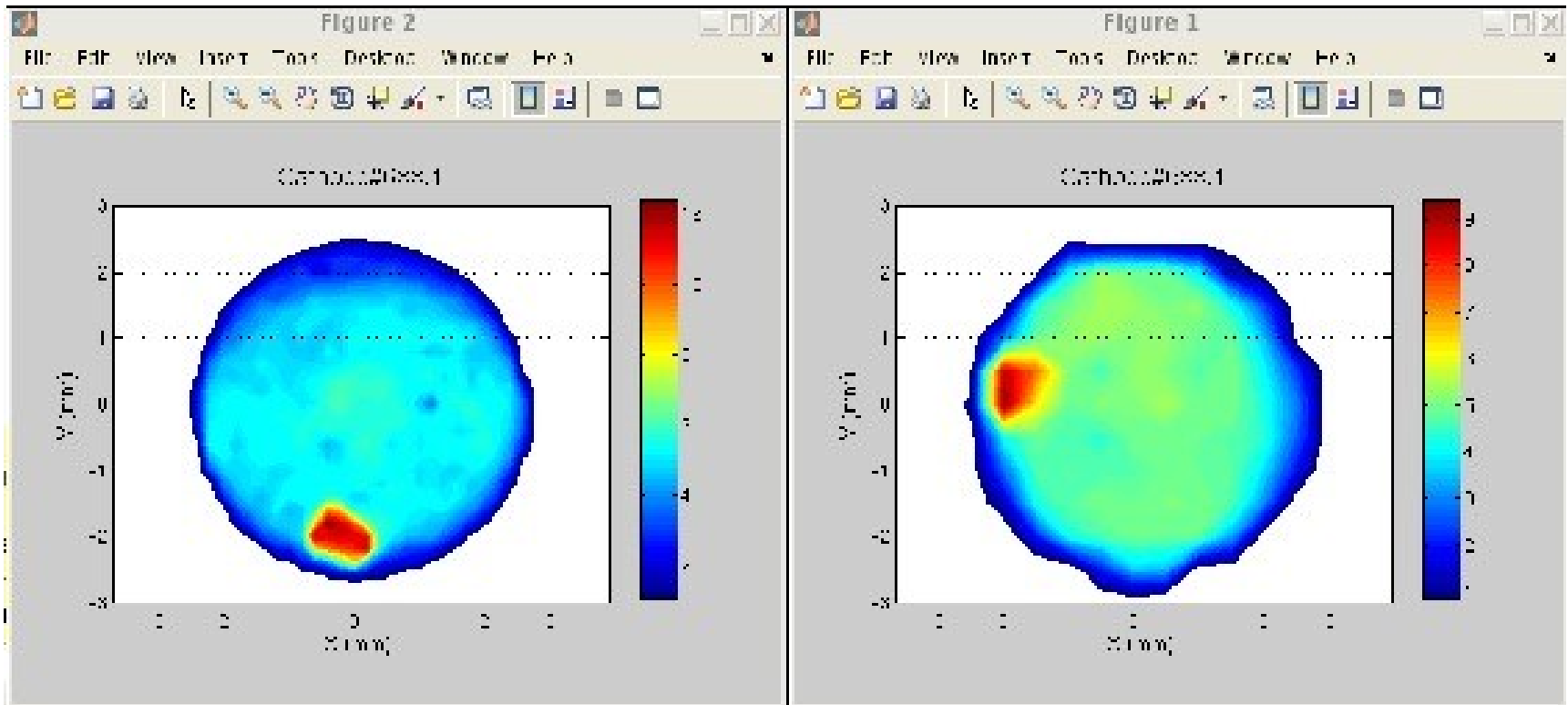


Run coordination meeting.

Grygorii Vashchenko
18.06.2015

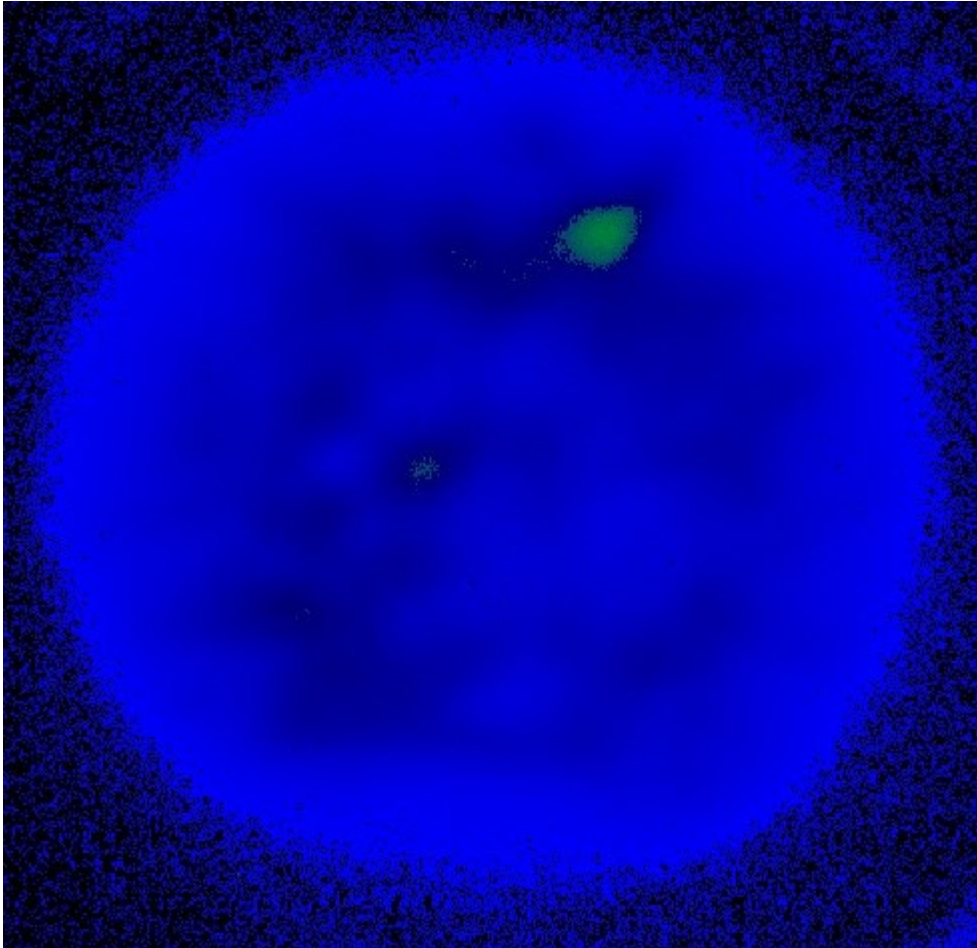
Hot spot on the cathode.

Was observed after shutdown. Cathode was rotated by 90 deg for check => confirmed.



Cathode imaging using electron beam was tried

Seems to be successful but limited by cameras alignments in the low section which has to be improved during the shutdown. Data has to be summarized and presented later in details.

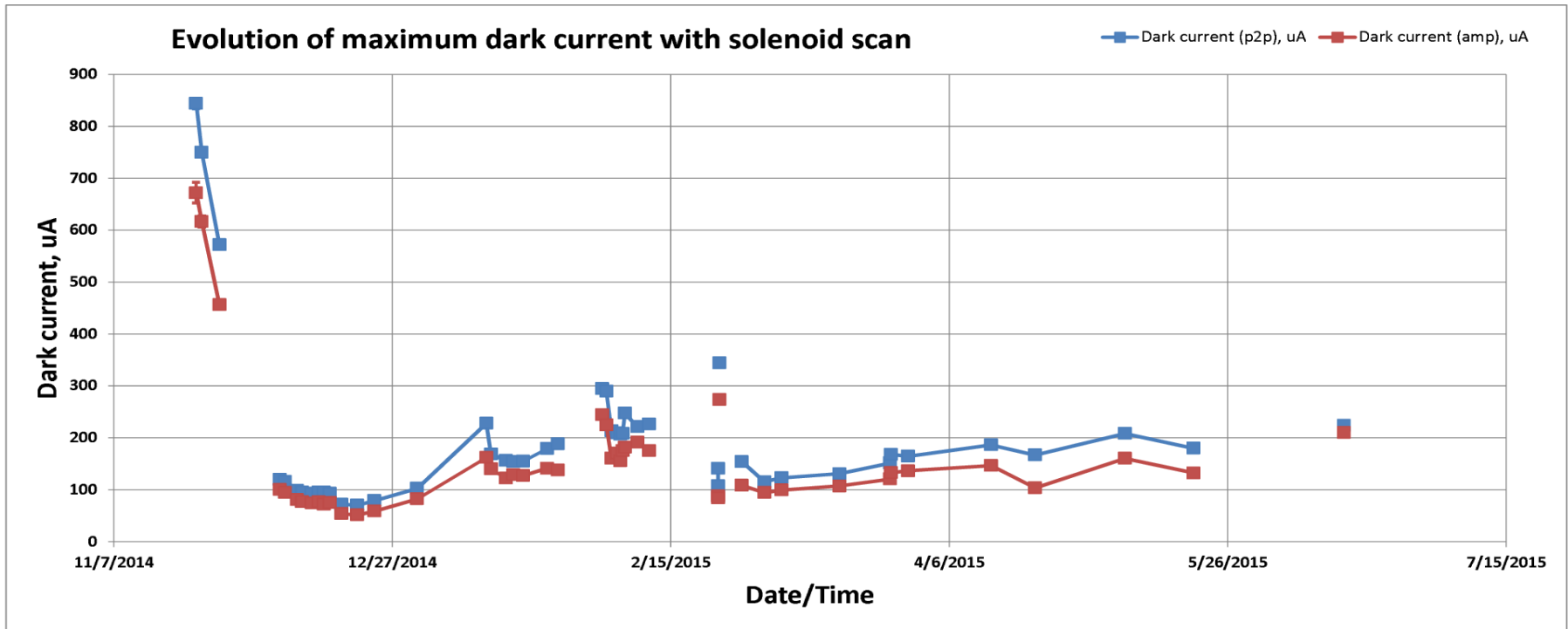


uTCA server problem: problem believed to be found and related to multithreading. In our case, most probably appeared when activating the TINE thread in llrf DOOCS server (GV: can you ask HH colleagues from RAGAE if they met the same problem after activating TINE thread? Would be interesting to know. This also can explain why the problem not exist at FLASH, may be they have no TINE thread active). Problem communicated to HH DOOCS experts in details. HH experts have released the new version of library which fixes the problem. It is installed for us on 17.06.2015 by Bagrat. **Solved.**

Dark current measurement

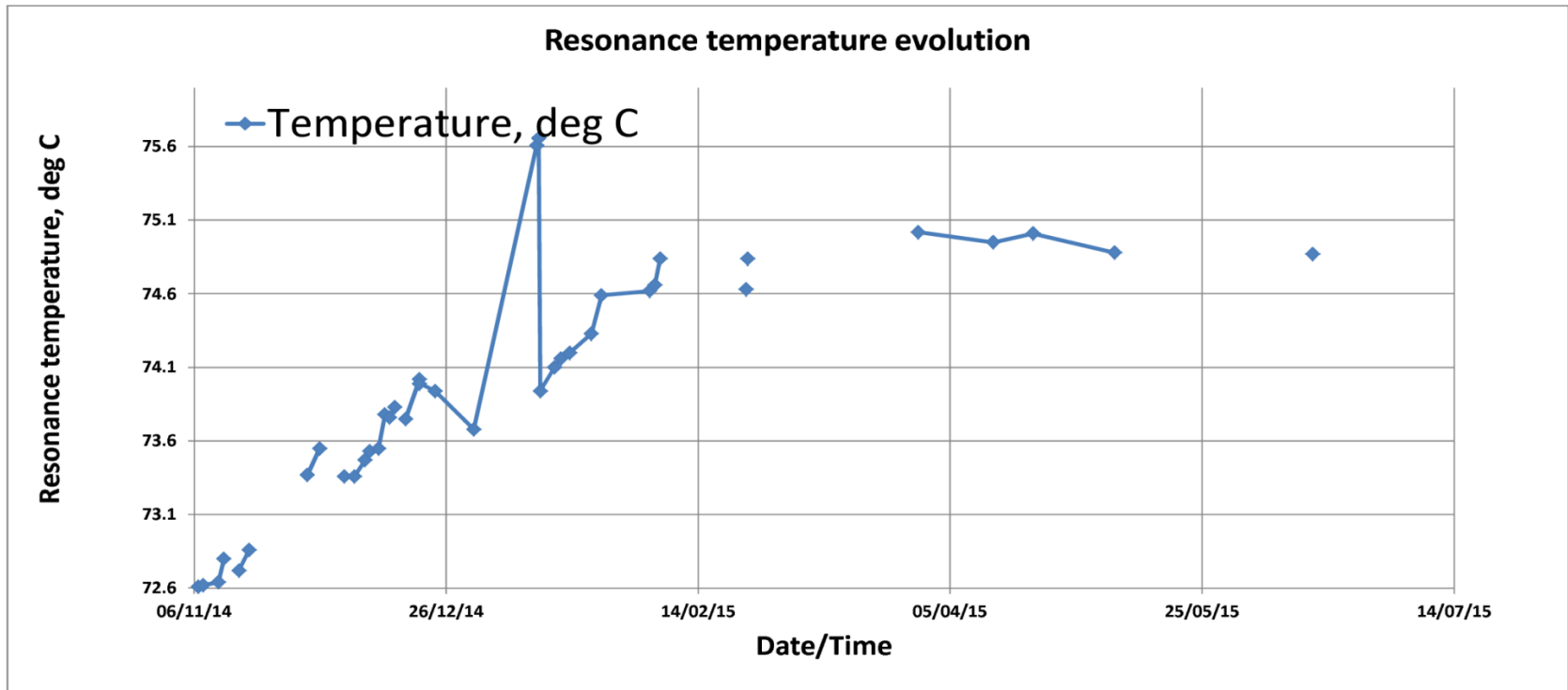
Dark current was measured on 15.06.2015 => increased as compared to previous measurement, may be due to recent re-insertion of the cathode or cathode quality degradation (hot-spot)

4/21/2015 09:20	160/201	6.54	330	166.7	2.6	330	103.5	2.4	
5/7/2015 13:10	160/200	6.37	350	208.2	1.8	350	160.2	1.6	
5/19/2015 19:05	160/200	6.33	330	179.9	1.4	330	132.4	2.4	
Cathode 663.1 (Cs₂Te) is reinserted 10.06.2015									
6/15/2015 20:50	160/200	6.38	360	224.1	2	360	210.2	2.2	

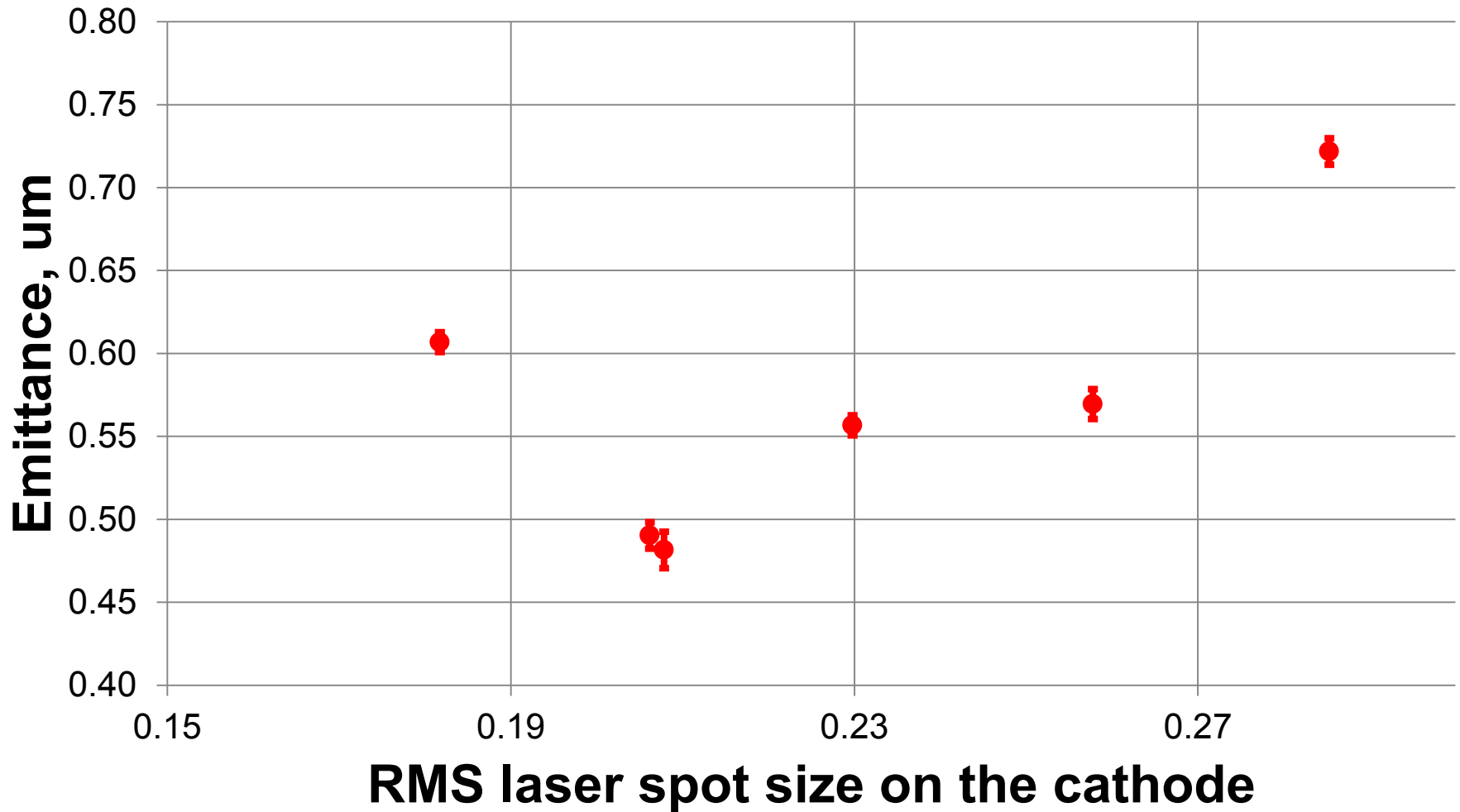


No change as compared to the previous measurement

3/29/2015 15:00	9700	360/400	44.2	3.823	3.645	0.178	4.67	75.02	73.67	70.17	77.12
4/13/2015 13:00	9700	360/400	44.7	3.850	3.66	0.19	4.7	74.95			
4/21/2015 10:04	9700	360/400	44.3	3.792	3.617	0.175	4.62	75.01	73.71	70.24	77.08
5/7/2015 14:30	9700	360/400	30.2	3.898	3.717	0.181	4.64	74.88	73.48	70.26	76.94
cathode 663.1 (Cs2Te) reinserted 10.06.2015											
6/15/2015 22:00	9700	360/400	44.6	3.826	3.659	0.168	4.39	74.87	73.49	71.2	76.94



Emittance measurements for 100 pC, MMMG gun phase, BSA scan



Emittance measurements for 500 nC, BSA of 1.2 mm,

to do:	Measurements						
Week 25	Mon Jun-15	Tue Jun-16	Wed Jun-17	Thu Jun-18	Fri Jun-19	Sat Jun-20	Sun Jun-21
Morn. 7:00 to 15:30	Rublack Kalantaryan	Rublack Kalantaryan	Gross Rublack	Gross Rublack	Gross Rublack	Krasilnikov Rimjaem	Krasilnikov Rimjaem
Late 15:00 to 23:30	Vashchenko Zhao	Vashchenko Zhao	Vashchenko Zhao	Vashchenko Zhao	Vashchenko Zhao	Gross Zhao	Gross Zhao
Night 23:00 to 7:30	Huck Boonpornpras	Huck Boonpornpras	Huck Boonpornpras	Huck Boonpornpras	Huck Boonpornpras	Huck Boonpornpras	Huck Boonpornpras
Resp. Phys							
Laser	Rublack	Rublack	Rublack	Rublack	Rublack	Rublack	Rublack
RF	Jachmann	Jachmann	Jachmann	Jachmann	Jachmann	Jachmann	Jachmann
Vaku.	Rueger	Rueger	Rueger	Rueger	Rueger	Rueger	Rueger
Contr.	Kalantaryan	Kalantaryan	Kalantaryan	Melkumyan	Melkumyan	Melkumyan	Melkumyan
Electr.	Schultze	Schultze	Schultze	Schultze	Schultze	Schultze	Schultze
Infrast.	Schulze	Schulze	Schulze	Schulze	Schulze	Schulze	Schulze
SSB	Rublack	Rublack	Rublack	Rublack	Rublack	Rublack	Rublack
Schichtabsich	Otevre	Gross	Krasilnikov	Krasilnikov	Otevre	Otevre	Renier
Issued on 11-Jun-2015	A gray field means the status has changed since the last version						

