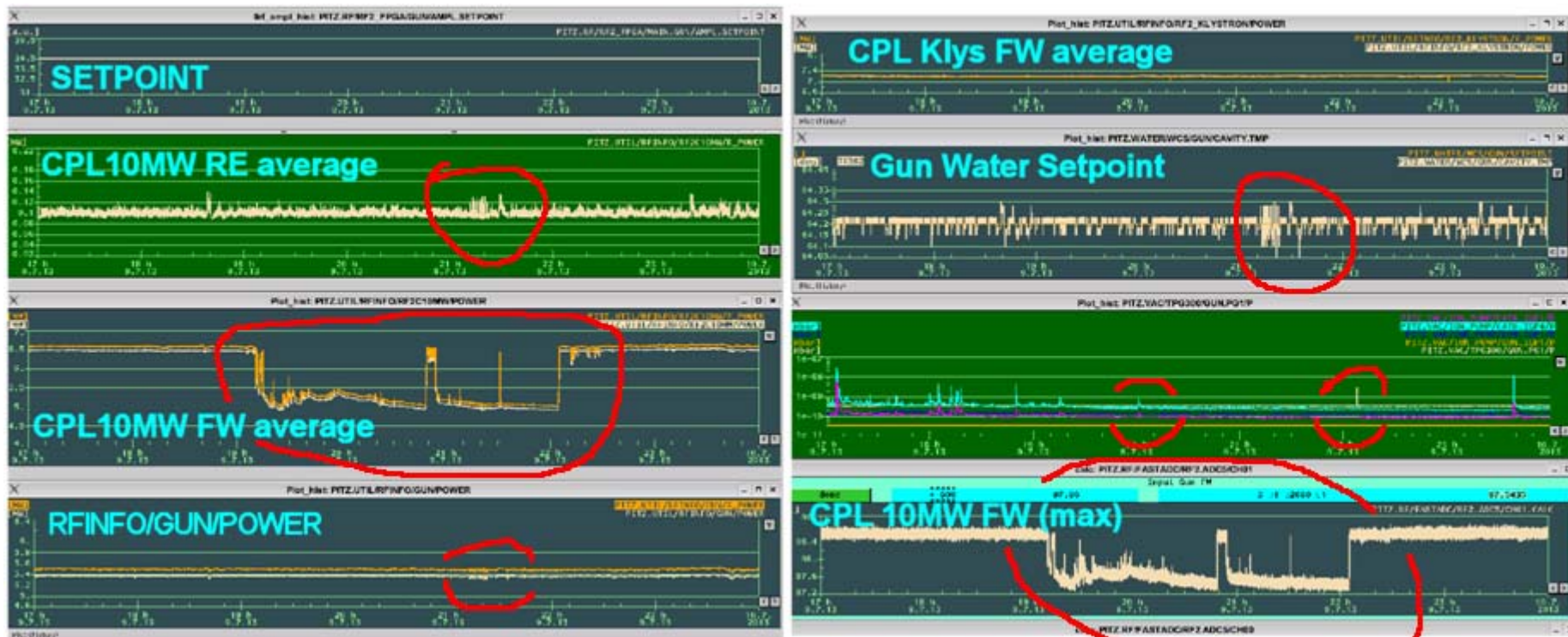


Data collected from shift crew



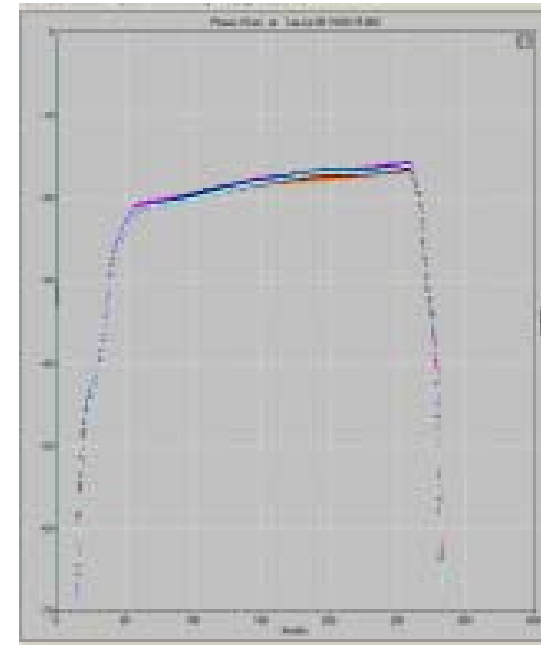
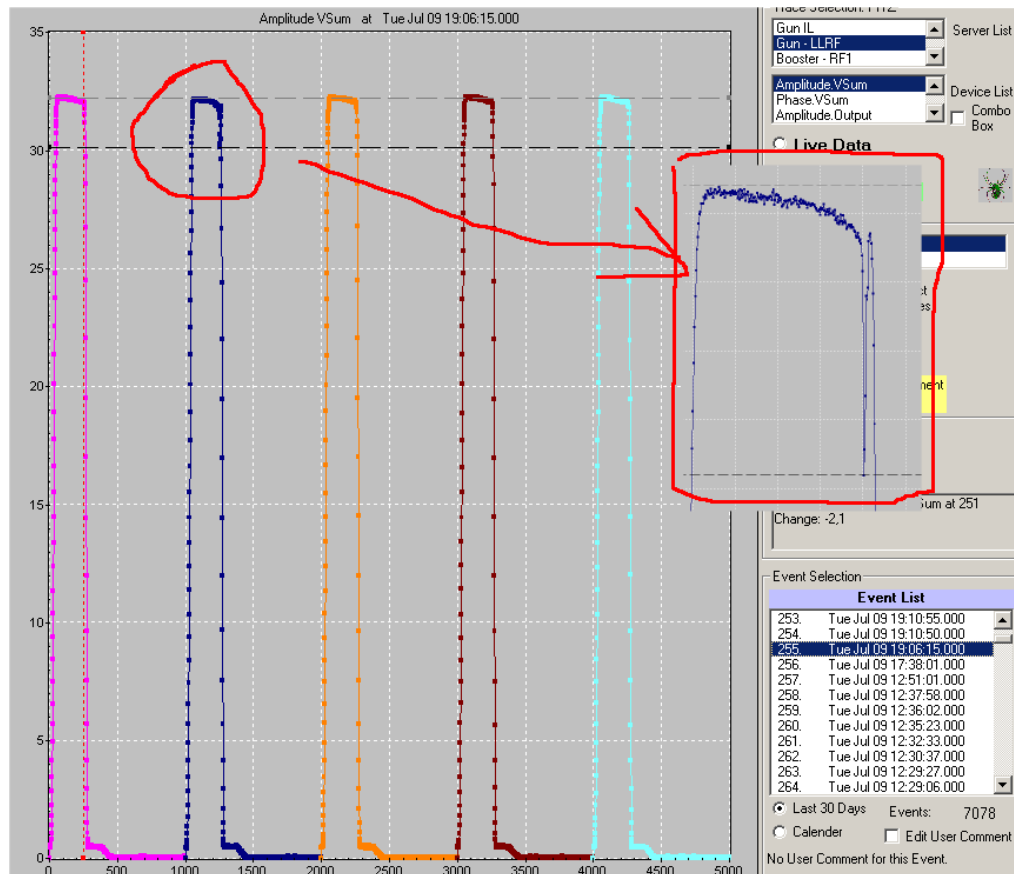
Powermeter and LLRF vectorsum shows the same:

- meas. amplitude changes @ 10MW FW and RE.
- meas. phase not affected (at least no effect seen)

NOTE: measured VS is vectorsum of Vfor, Vrefl

- Since two independent ADCs (powermeter+ADC and SIMCON) shows the same:
-> signals come from 10MW coupler that way. Problem in tunnel.

Data from event archive.

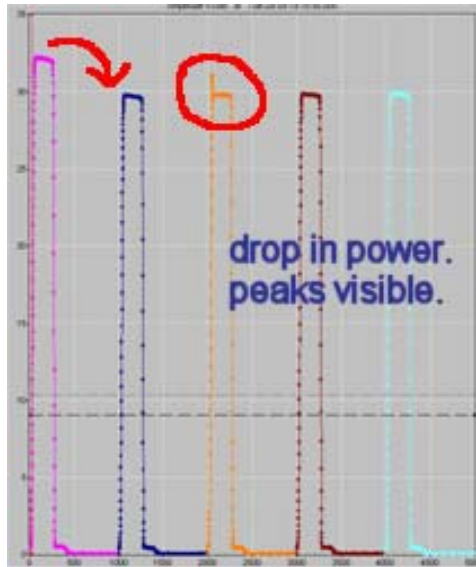


VS phase of this event.

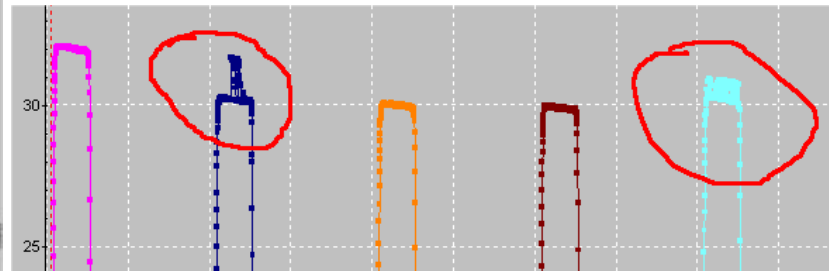
VS amplitude

- „power drop“ starts Tue Jul 09 19:06:15
- visible on powermeter readings.
- visible on VS amplitude, but not on VS phase.

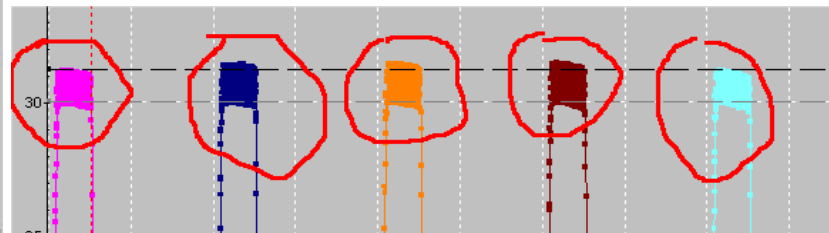
Further samples.



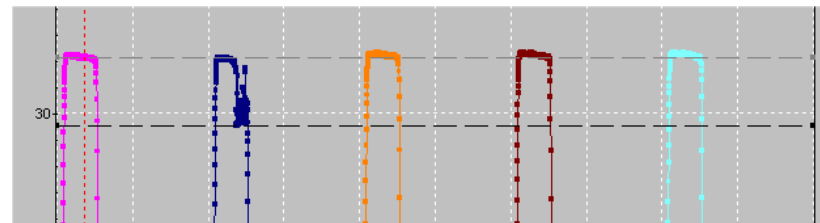
19:10:50



19:11:28

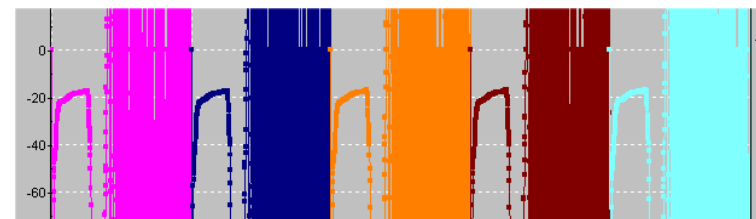


19:11:31



20:49:05

- again: visible on amplitude, but not on phase.
- **NOTE:** meas. LLRF VS is composed of **Vfor** and **Vrefl**: changes on one of both should impact also meas. VS phase if this is a measurement problem only.



VS phase from last event.